

SLVT

INDUSTRIAL VALVE SELECTION MANUAL

工业阀门选型手册

浙江善流阀门科技有限公司

ZHEJIANG SHANLIU VALVE TECHNOLOGY CO., LTD.

浙江省永嘉县瓯北街道三桥工业区林下路1号

Address: No.1 Linxia Road, Sanqiao Industrial Zone, Oubei Street,
Yongjia County, Zhejiang Province, China

工厂电话/Factory Tel: 0577-67198981

传真/Fax: 0577-67038872

<https://www.shanliuvalve.com>

E-mail: sales@shanliuvalve.com

浙江善流阀门科技有限公司

ZHEJIANG SHANLIU VALVE TECHNOLOGY CO., LTD.



工业阀门选型手册



林炳春董事长随同胡锦涛主席访问古巴合影（中排左三）
 Mr Lin Bingchun Visit Cuba With President Hu Jing Tao
 (The Third From Left in Uine 2)

林炳春董事长随同温家宝总理在欧洲访问留影（后二排右六）
 Mr Lin Bingchun Vsit Europe With Premier Wen Jlabao
 (The Soth From The Right In Lane 3)



INDUSTRIAL VALVE SELECTIONMANUAL



企业简介

ENTERPRISE PROFILE

浙江善流阀门科技有限公司(简称“善流科技”)成立于2018年,总部及制造基地位于“中国泵阀之乡”——浙江温州永嘉,是一家集研发、设计、生产、销售与服务于一体的现代化高新技术企业,专注于流体控制阀门高端领域。公司深耕城市给排水、水利水电、市政管网、消防系统及环保水处理等领域,主营闸阀、蝶阀、调流阀、止回阀、减压阀、空气阀、水力控制阀等系列产品,致力于为全球水务工程提供一站式阀门解决方案。秉承“零缺陷、全溯源、持续改进”的质量方针,公司建立了全流程、标准化、数据驱动的生产管理体系。产品严格遵循GB、ISO、API、AWWA等国内外权威标准,实施模块化设计、CAD/CAE结构优化与有限元分析,确保结构安全与性能优越。从原材料到售后服务,公司推行生产工艺标准化、精益布局与5S管理,严格执行“自检、互检、专检”三检制,关键工序结合无损探伤、热处理、高精度研磨等工艺,确保密封可靠、质量过硬。所有产品赋予唯一身份编号,实现全生命周期可追溯。通过SPC等统计技术、根本原因分析与纠防体系,持续改进过程能力。公司倡导“技术为本、质量为先、服务至上”,以“尽善尽美,流光溢彩”为经营理念,致力于成为全球一流的流体控制设备供应商,为智慧水务系统贡献“善流”力量。公司通过实施严谨的生产管理体系,不仅能够保证给排水阀门产品在出厂时满足高标准,更能确保其在长达数十年的服役期内稳定运行,为城市的“生命线”工程提供坚实可靠的保障。这套体系是公司核心竞争力的重要体现,也是向客户传递信心的重要承诺

Zhejiang Shanliu Valve Technology Co., Ltd. ("Shanliu Technology") was founded in 2018, with its headquarters and manufacturing base located in Yongjia, Wenzhou, Zhejiang – the "Hometown of China's Pump Valves". It is a modern high-tech enterprise integrating R&D, design, production, sales, and service, with a focus on the high-end field of fluid control valves. The company specializes in urban water supply and drainage, water conservancy and hydropower, municipal pipelines, fire protection systems, and environmental water treatment. Its main products include gate valves, butterfly valves, flow control valves, check valves, pressure reducing valves, air valves, and hydraulic control valves, and it is committed to providing one-stop valve solutions for global water engineering projects. Adhering to the quality policy of "Zero Defects, Full Traceability, Continuous Improvement", the company has established a fully integrated, standardized, and data-driven production management system. Products strictly comply with authoritative national and international standards such as GB, ISO, API, and AWWA. The company employs modular design, CAD/CAE structural optimization, and finite element analysis to ensure structural safety and superior performance. From raw materials to after-sales service, the company implements standardized production processes, lean layout, and 5S management, strictly enforcing the "self-inspection, mutual inspection, and specialized inspection" system. Key processes integrate non-destructive testing, heat treatment, and high-precision grinding to ensure reliable sealing and excellent quality. Each product is assigned a unique identification number, enabling full life-cycle traceability. Through statistical process control (SPC), root cause analysis, and corrective and preventive action systems, the company continuously improves process capability. The company advocates the principles of "Technology as the Foundation, Quality as the Priority, Service as the Supreme" and operates under the business philosophy of "Continuous Perfection, Flowing Excellence", striving to become a world-class supplier of fluid control equipment and to contribute the strength of "Shanliu" to smart water systems. By implementing a rigorous production management system, the company not only ensures that its water supply and drainage valves meet high standards upon delivery but also guarantees stable operation throughout decades of service, providing reliable and solid protection for the city's "lifeline" projects. This system is a key embodiment of the company's core competitiveness and an important commitment to delivering confidence to its customers.

品牌理念 BRAND CONCEPT

浙江善流阀门科技有限公司（简称“善流科技”），英文名称：Zhejiang Shanliu Valve Technology Co., Ltd.（注册商标简称“SLVT”）“上善若水，源远流长”是善流科技文化的核心精神，经过将近十年的不懈努力和执着奋斗，走出了一条属于自己的品牌发展之路，并立志成长为中国乃至世界知名的阀门制造企业。

Zhejiang Shanliu Valve Technology Co., Ltd. (abbreviated as "Shanliu Technology"), English trade name: Zhejiang Shanliu Valve Technology Co., Ltd. (registered trademark abbreviation: "SLVT"). "The highest good is like water; a long and endless source flows far." This is the core spiritual essence of Shanliu Technology's corporate culture. Through nearly ten years of unremitting efforts and persistent dedication, the company has forged its own path of brand development. It aspires to grow into a world-renowned valve manufacturing enterprise, first in China and then across the globe.

公司愿景：做全球最好的阀门

企业精神：学习、积累、沉淀、提高。

企业宗旨：持续发展、引领未来。

企业管理理念：以人为本、以诚为善、与时俱进、合作共赢。

经营理念：产品服务于顾客，一切以顾客为中心。

行为准则：诚信做人、踏实做事、科技兴厂、事业为民。

企业价值观：品牌+员工+社会=企业价值

质量方针：全员参与，质量提升，持续改进，顾客满意。

企业管理方针：以管理的规范为基石，以市场的拓展为平台，以产品的创新为砥柱，以技术的进步为栋梁，以品质的卓越为保障，构筑坚实辉煌的企业大厦。

企业目标：树立全国阀门行业名牌地位，跻身世界阀门专业品牌行列，生产全球最好的阀门。

人才理念：以人为本，实现资本和智本结合；产业报国，体现人生和事业价值。

质量理念：品质铸就善流科技，品牌誉满善流科技。

市场理念：命运共同，利益“双赢”，产销携手，拓展市场。

服务理念：亲情、快捷、规范、完美。

Company vision: to be the best valve in the world. Accumulation and improvement of enterprise spirit.

Enterprise tenet: sustainable development, leading the future.

Enterprise management philosophy: people-oriented, faith, keeping pace with the times, win-win cooperation.

Business philosophy: products serve customers, all customer-oriented.

Code of conduct: be honest, work steadfastly, prosper the factory with science and technology and work for the people.

Enterprise values: brand+employee+society=enterprise value

Quality policy: full participation, quality improvement, continuous improvement, customer satisfaction.

Enterprise management policy: Based on the standard of management, market development as the platform, product innovation as the mainstay, technological progress as the pillar, quality excellence as the guarantee, to build a solid and brilliant enterprise building.

Enterprise goal: to establish the famous brand status of the national valve industry, to become one of the professional valve brands in the world, and to produce the best valve in the world.

Talent concept: people-oriented, to achieve the combination of capital and intelligence; industry serving the country, reflecting the value of life and career.

Quality concept: Shanliu Technology is built by quality, and Shanliu Technology is famous for its brand.

Market concept: common destiny, win-win benefits, on the front of product and marketing, expanding the market.

Service concept: family, fast, standard and perfect.



客户的需求就是我们努力的方向

The demand of customers is the direction of our efforts

技术驱动针对性强——SLVT 的诞生

善流科技技术研发团队经历了石化井喷期与建筑行业的大发展时期，在每个发展阶段，团队都会针对市场的最新需求与行业特点开发针对性产品。如工业领域的石化、钢铁厂、电厂等专用阀门，市政水利领域的水利控制阀等。

SLVT 品牌正是在这种市场与技术双驱动的背景下，针对数据中心规模化、集控化、自动化、模块化的需求特征入手从而研发诞生。因此 SLVT 产品的设计理念即专业致力于解决数据中心空调系统所用阀门的特定需求，公司并为此引进欧美先进制造工艺，优化扩充该产品线产能以满足这一特定市场的需求。

精诚合作服务至上

良好的合作是打造品牌影响力的关键因素之一，而内在产品的质量提升和是否适用则是产品优秀与否的重要衡量标准。优质的服务源于对用户需求的不断满足，而产品技术更新很大程度上也是由于市场需求的不断变化。面对目前数据中心规模化发展趋势，所用阀门产品越来越专业化，浙江善流阀门科技有限公司将会继续保持和各大数据中心建设者的良好沟通，不断学习，不断完善服务来满足数据中心的发展需要。与此同时，善流科技也将进一步做好售前、售中、售后各环节的服务工作，时刻以客户利益为中心，向数据中心项目提供更为优质、精准、专业的阀门产品与技术服务。

善流科技人将秉承“客户的需求就是我们努力的方向”这一宗旨，在市场中砥砺前行，努力攀上阀门行业技术与品质的珠穆朗玛峰。

TECHNOLOGY DRIVEN AND TARGETED-THE BIRTH OF SLVT

SHANLIU TECHNOLOGY technology research and development team has experienced the great development period of petrochemical blowout period and construction industry. In each development stage, the team will develop targeted products according to the latest market demand and industry characteristics. Such as petrochemical industry, steel plants, power plants and other special valves, municipal water conservancy control valves.

Under the background of double driving of market and technology, SLVT brand starts from the demand characteristics of large-scale, centralized control, automation and modularization of data center, thus is born. Therefore, the design concept of SLVT products is dedicated to solve the specific needs of valves used in air conditioning system of data center. The company introduces advanced manufacturing technology from Europe and America to optimize and expand the production capacity of the product line to meet the demand of this specific market.

SINCERE COOPERATION AND SERVICE FIRST

Good cooperation is one of the key factors to build brand influence, and the quality improvement and applicability of internal products is an important measurement standard of product excellence. High quality service comes from the continuous satisfaction of user needs, and product technology update is also due to the continuous change of market demand to a large extent. Facing the trend of large-scale development of the data center, the valve products used are becoming more and more professional. Zhejiang Shanliu Valve Technology Co., Ltd. will continue to maintain good communication with the builders of major data centers, continue to learn, and constantly improve services to meet the development needs of the data center. At the same time, SHANLIU TECHNOLOGY further do a good job in the pre-sale, in-sales and after-sales services, always taking the interests of customers as the center and providing more high-quality, accurate and professional valve products and technical services to the data center project.

SHANLIU TECHNOLOGY people will adhere to the tenet of customer's demand is the direction of our efforts, forge ahead in the market, and strive to climb the technology and quality of valve industry to Mount Everest.



技术创新

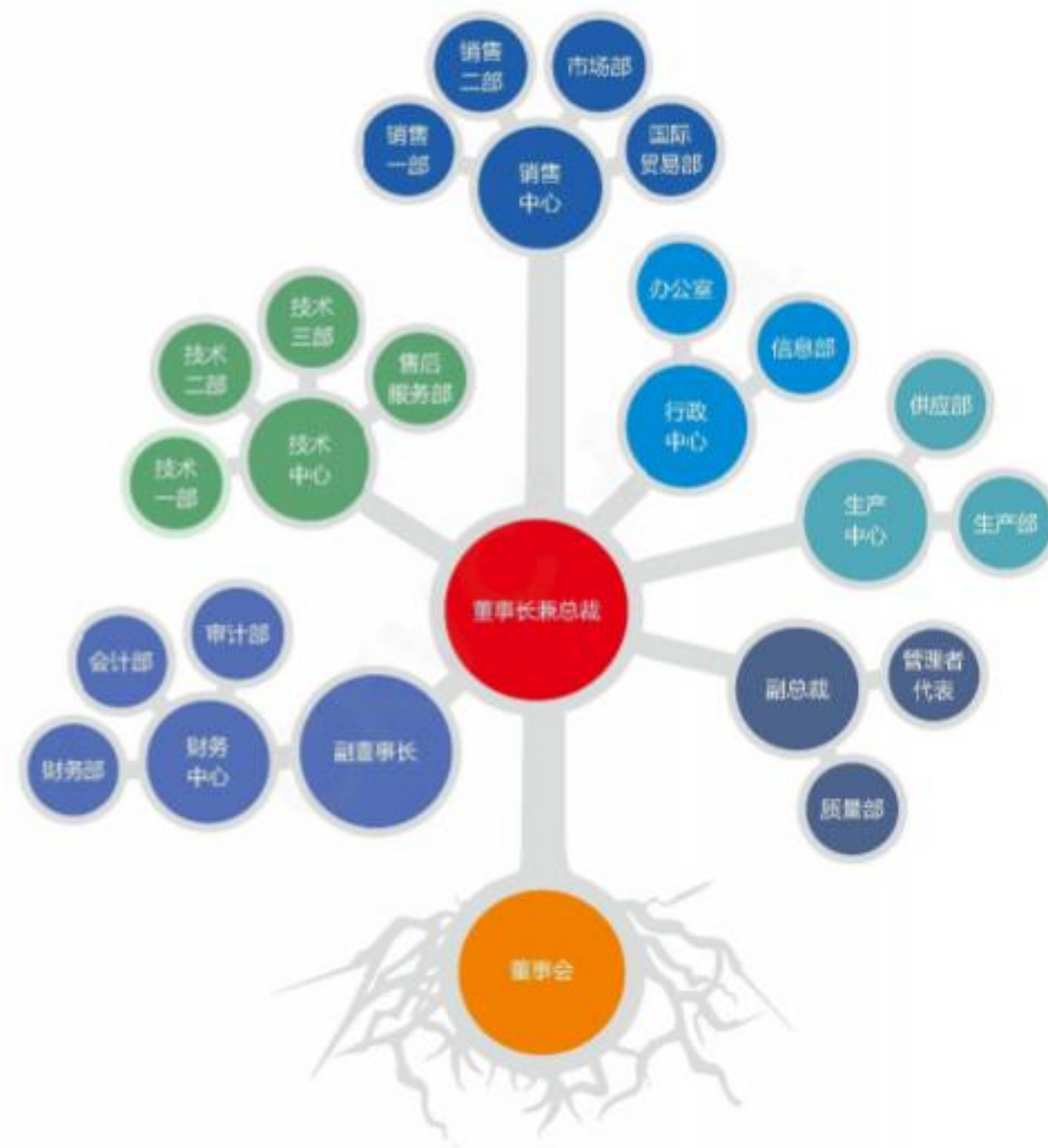
TECHNOLOGICAL INNOVATION

公司聘请资深阀门专家和引进阀门领域核心技术。依靠人才、技术、装备、信息、管理、团队精神，经过二十年的风雨洗礼，迎来了今朝的辉煌。

依靠IS9001、API、CE、AZ等质量管理体系规范运作和国外先进标准、国标、行标的贯彻、实现了产品的标准化生产。为拓宽市场走向世界夯实了腾飞的平台。长年来，应用ERP、CAD/CAM、三维立体模拟制造设计系统、产销存软件等信息技术，展示了公司信息技术网络化管理的优势。

The company hires senior valve experts and introduces core technologies in the valve field. Rely on human resources, technology, equipment, information, management, team spirit, After twenty years of wind and rain, Ushered in the current glory.

Rely on IS9001, API, CE, AZ and other quality management systems to standardize operation and The implementation of foreign advanced standards, national standards, and industry standards has achieved standardized production of products. It provides a platform for taking off to broaden the market to the world. For many years, ERP, CAD/CAM, Three-dimensional simulation manufacturing design system, Information technology such as production, marketing and inventory software, Demonstrated the advantages of the company's information technology network management.



SLVT



展厅一角

CORNER OF THE EXHIBITION HALL

SLVT 展厅以独特的设计风格，多方位展示SLVT 的产品和企业文化，这里是见证 SLVT 的发展历程和聚集SLVT 丰硕成果的焦点区域。

With its unique design style,SLVT exhibition hall displays SLVT products and corporate culture in multiple directions.It is the focus area to witness the development process of SLVT and gather rich achievements ofSLVT.



技术探讨

TECHNICAL DISCUSSION

通过自主创新驱动企业发展，技术创新激发企业人员在产品创新，商业模式创新领域的创新思维和应用。更多的是为了保持或者拉大领先对手的技术竞争优势；以及打造具有核心竞争力的产品。

Independent innovation drives the development of enterprises, and technological innovation stimulates the innovative thinking and application of enterprise personnel in the field of product innovation and business model innovation. What's more, it is to maintain or expand the technology competitive advantage of the leading competitors; and to create products with core competitiveness.



生产设备

PRODUCTION EQUIPMENT

随着智能制造领域高速发展，阀门产业向智能制造方向转型已是大势所趋，善流科技主动拥抱智能制造，率先完成阀门生产柔性生产线的建设和智能化柔性制造系统的建立，本着缩短阀门研制周期，提高生产效率和产品质量，降低运营成本和资源能源消耗为目标。专业制造阀门产品为智能制造的切入点，从而迈向智能互联网和传统工业的融合。

善流科技建立一套统一的云数据平台共享，应用阀门产品从企业生产管理、项目管理、客户管理、产品生产流程管理、制造加工管理、组装测试到出厂验货各个环节。

Today, the valve industry follows closely to the trend of the rapid development in the intelligent manufacturing. SLVT follows this trend and become the first company in China to setup its own flexible production line and intelligent flexible manufacturing system. Based on the goal to shorten valve development cycle, improve productivity and quality of valves, reduce the operating costs and energy consumption, SLVT published its unique high-performance valve as its products to step into the era of intelligent manufacturing.

SLVT has developed an intergrated cloud system to share the informaton of valve productions, project management, customer requirements, manufacturing process, management of product assembling and testing to assure the quality of each valve.



智能生产线
INTELLIGENT PRODUCTION
LINE



高精度工艺
HIGH PRECISION
PROCESS



所有零件实现互换
ALL PARTS ARE
INTERCHANGEABLE



物联网智慧云
IOT SMART
CLOUD



品质现场 QUALITY SCENE

从毛坯铸件到最终产品，拥有先进的检验手段和测试设备进行质量控制。所有产品都按照相关标准进行精确的材质分析和尺寸检验，严格的工序检验贯穿整个生产过程，每台阀门都按照客户的要求或国际标准生产，并在装运前进行最终的检测。我们将努力实现阀门零缺陷。

From the blank casting to the final product, it has advanced inspection means and testing equipment for quality control. All products are subject to accurate material analysis and dimensional inspection according to relevant standards, strict process inspection is carried out throughout the production process, each valve is manufactured according to customer requirements or international standards, and final inspection is conducted before shipment. We will strive to achieve zero valve defects.





压力测试 STRESS TESTING

每一件产品都经过严格的密封性试验检测，建立完善的检测机制，确保产品100%可靠性方可出厂。

Each product has been strictly tested for tightness, and a perfect detection mechanism has been established to ensure 100% reliability of the product before leaving the factory.



理化中心 STRESS TESTING

配备先进的理化仪器，对材料进行科学分析，通过物理、化学等试验，保障产品材质达标后进入生产环节。

Equipped with advanced physical and chemical instruments, scientific analysis of materials, through physical and chemical tests, to ensure that the product material can enter the production link after reaching the standard.



目录
contents



02/06
闸阀系列
Gate Valve Series



07/12
截止阀系列
Globe Valve Series



13/16
止回阀系列
Check valve series



17/22
球阀系列
Ball Valve Series



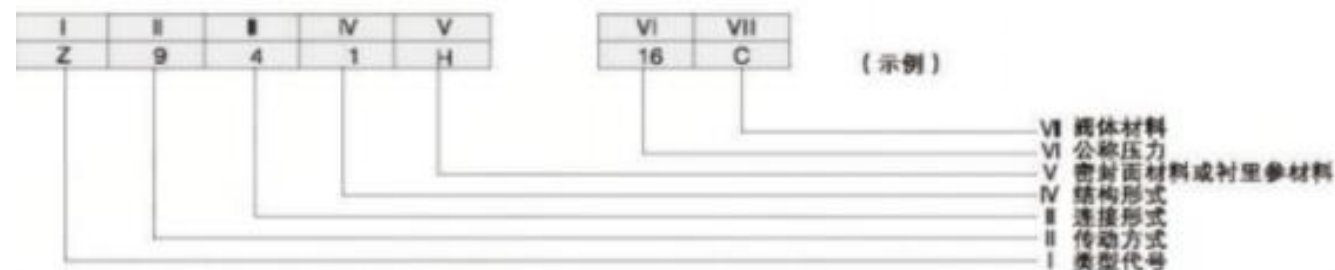
23/26
蝶阀系列
Butterfly Valve Series



27/30
调节阀系列
Control valve series



31/34
其他阀门系列
Other Valve Series



代号	0	1	2	3	4	5	6	7	8	9
II-传动方式	电磁动	电磁-液动	电-液动	蜗轮	正齿轮	锥齿轮	气动	液动	气-液动	电动
III-连接形式	-	内螺纹	外螺纹	-	法兰	-	焊接	对夹	卡箍	卡套
I-类型代号	VI-结构形式									
闸阀	Z	明杆				暗杆				-
		弹性闸阀		刚性		弹性		刚性		
截止阀	J	直通式	Z型式	三通式	角式	直流式	直通式	直角式	-	-
节流阀	L	-	-	-	-	-	-	-	-	-
柱塞阀	U	-	-	-	-	-	-	-	-	-
球阀	Q	半球直通	浮动球			固定式			-	
			直通式	三通式Y形	-	三通式	四通式	直通式	三通式	T形
蝶阀	D	非密封型	密封式			-				
隔膜阀	G	三偏心	中线式	单偏心	双偏心	连杆机构	三偏心	中线式	单偏心	双偏心
旋塞阀	X	-	直立式	-	截止式	-	直流式	直通式	-	角式Y形
止回阀	H	-	升降式		旋启式		多瓣式		回转碟形	截止止回
安全阀	A	带散热片全启式	弹簧密封		弹簧不密封		弹簧密封		弹簧不密封	
			微启式	全启式	带扳手	带扳手	带控制全启式	带控制全启式	微启式	全启式
减压阀	Y	-	薄膜式	弹簧薄膜式	活塞式	波纹管式	杠杆式	-	-	-
疏水阀	S	-	浮球式	-	浮桶式	膜盒式	钟形浮子式	膜盒式	双金属片式	脉冲式
排污阀	P	-	液面连续排放		液面间断排放		-			
			直通式	角式	-	-	直流式	直通式	角式	浮阀板式

VI公称压力 公称口径的数值用10倍的兆(MPa)数表示;用于电站工业的阀门,当介质最高温度超过425℃时,标注工作压力。

V-密封面材料或衬里材料	代号	V-阀座材料	代号
巴氏合金	B	尼龙塑料	N
搪瓷	C	渗碳钢	P
渗氮钢	D	衬铅	Q
氟塑料	F	Mo2Ti系不锈钢	R
陶瓷	G	塑料	S
Cr13系不锈钢	H	铜合金	T
衬胶	J	橡胶	X
蒙乃尔合金	M	硬铝合金	Y

VII-阀体材料	代号	VII-阀体材料	代号
钛及钛合金	TI	球墨铁	Q
碳钢	C	Mo2Ti系不锈钢	R
Cr13系不锈钢	H	塑料	S
铸铜	I	铜及铜合金	T
可锻铸铁	K	铸铝	V
合金	L	灰铸铁	Z
18-8系不锈钢	P		

注:1.由阀门直接加工的阀座密封面材料代号用“W”表示;
2.除隔膜阀外,当密封材料不同时,用低硬度材料代号表示。



Gate Valve Series

闸阀是作为截止介质使用，在全开时整个流通直通，此时介质运行的压力损失最小。闸阀通常适用于不需要经常启闭，而且保持闸板全开或全闭的工况。不适用于作为调节或节流使用。对于高速流动的介质，闸板在局部开启状况下可以引起闸门的振动，而振动



Z41H 中低压闸阀
Medium and low pressure gate valves

公称口径: DN15~1200mm
公称压力: PN1.0~4.0MPa
适用介质: 水、油品、蒸汽
适用温度: ≤425°C

Nominal Diameter: DN15~1200mm
Nominal Pressure: PN1.0~4.0MPa
Mediums: Water, oil, steam
Temperature Range: ≤425°C



Z41H 高压闸阀
High pressure gate valve

公称口径: DN15~800mm
公称压力: PN6.4~16MPa
适用介质: 水、油品、蒸汽
适用温度: ≤425°C

Nominal Diameter: DN15~800mm
Nominal Pressure: PN6.4~16MPa
Mediums: Water, oil, steam
Temperature Range: ≤425°C



Z540Y 伞齿轮闸阀
Bevel gear gate valve

公称口径: DN300~1200mm
公称压力: PN1.0~16MPa
适用介质: 水、蒸汽、油品
适用温度: ≤425°C

Nominal Diameter: DN300~1200mm
Nominal Pressure: PN1.0~16MPa
Mediums: Water, steam, oil
Temperature Range: ≤425°C



Z941H 电动闸阀
Electric gate valve

公称口径: DN15~1200mm
公称压力: PN1.0~16MPa
适用介质: 水、蒸汽、油品
适用温度: ≤425°C

Nominal Diameter: DN15~1200mm
Nominal Pressure: PN1.0~16MPa
Mediums: Water, steam, oil
Temperature Range: ≤425°C



Z641H 气动闸阀
Pneumatic gate valve

公称口径: DN15~1200mm
公称压力: PN1.0~16MPa
适用介质: 水、蒸汽、油品
适用温度: ≤425°C

Nominal Diameter: DN15~1200mm
Nominal Pressure: PN1.0~16MPa
Mediums: Water, steam, oil
Temperature Range: ≤425°C



Z41W 不锈钢闸阀
Stainless steel gate valve

公称口径: DN15~1200mm
公称压力: PN1.0~16MPa
适用介质: 水、蒸汽、油品
适用温度: ≤425°C

Nominal Diameter: DN15~1200mm
Nominal Pressure: PN1.0~16MPa
Mediums: Water, steam, oil
Temperature Range: ≤425°C

闸阀系列
Gate Valve Series

闸阀系列
Gate Valve Series



DZ40Y 低温闸阀
Lowtemperature gate valve

公称口径: DN15~400mm
公称压力: PN1.0~4.0MPa
适用介质: 水、蒸汽、油品、酸类
适用温度: $\geq -196^{\circ}\text{C}$

Nominal Diameter: DN15~400mm
Nominal Pressure: PN1.0~4.0MPa
Mediums: Water, steam, oil, acid
Temperature Range: $\geq -196^{\circ}\text{C}$



Z40W 美标闸阀
API gate valve

公称口径: 1/2"~40"
公称压力: 150~1500LB
适用介质: 水、蒸汽、油品
适用温度: $\leq 425^{\circ}\text{C}$

Nominal Diameter: 1/2"~40"
Nominal Pressure: 150~1500LB
Mediums: Water, steam, oil
Temperature Range: $\leq 425^{\circ}\text{C}$



FDZ45H 防盗闸阀
Security gate valve

公称口径: DN40~200mm
公称压力: PN1.0~4.0MPa
适用介质: 水、蒸汽、油品
适用温度: $\leq 425^{\circ}\text{C}$

Nominal Diameter: DN40~200mm
Nominal Pressure: PN1.0~4.0MPa
Mediums: Water, steam, oil
Temperature Range: $\leq 425^{\circ}\text{C}$



BZ41Y 保温闸阀
Insulation gate valve

公称口径: DN40~500mm
公称压力: PN1.0~10.0MPa
适用介质: 水、硝酸、尿素
适用温度: $\leq 425^{\circ}\text{C}$

Nominal Diameter: DN40~500mm
Nominal Pressure: PN1.0~10.0MPa
Mediums: Water, nitrate, urea
Temperature Range: $\leq 425^{\circ}\text{C}$



Z961H 高温高压整体锻钢闸阀
High pressure and high temperature solid forged steel valve

公称口径: DN15~350mm
公称压力: 1.0~32.0MPa
适用介质: 水、蒸汽、石油
适用温度: $\leq 425^{\circ}\text{C}$

Nominal Diameter: DN15~350mm
Nominal Pressure: PN1.0~32.0MPa
Mediums: Water, steam, oil
Temperature Range: $\leq 425^{\circ}\text{C}$



Z41Y 锻钢闸阀
Forged gate valve

公称口径: 1/2"~2"
公称压力: 150~2500Lb
适用介质: 水、蒸汽、油品
适用温度: $\leq 425^{\circ}\text{C}$

Nominal Diameter: 1/2"~2"
Nominal Pressure: 150~2500Lb
Mediums: Water, steam, oil
Temperature Range: $\leq 425^{\circ}\text{C}$



PZ41TC 陶瓷闸阀
Ceramic gate valve

公称口径: DN50~600mm
公称压力: PN1.0~4.0MPa
适用介质: 干灰、粉、煤灰及固体颗粒
适用温度: $\leq 350^{\circ}\text{C}$

Nominal Diameter: DN50~600mm
Nominal Pressure: PN1.0~4.0MPa
Mediums: Dry ash, fly, fly ash and solid
Temperature Range: $\leq 350^{\circ}\text{C}$



Z41F 衬氟闸阀
Fluorine-lining gate valve

公称口径: DN40~500mm
公称压力: PN1.6MPa
适用介质: 水、酸性、碱性
适用温度: $\leq 150^{\circ}\text{C}$

Nominal Diameter: DN40~500mm
Nominal Pressure: PN1.6MPa
Mediums: Water, acid, alkali
Temperature Range: $\leq 150^{\circ}\text{C}$



Z960/962Y 国标电站闸阀
GB eps gate valve

公称口径: DN40~600mm
公称压力: PN1.0~32MPa
适用介质: 水、蒸汽、油品
适用温度: $\leq 570^{\circ}\text{C}$

Nominal Diameter: DN40~600mm
Nominal Pressure: PN1.0~32MPa
Mediums: Water, steam, oil
Temperature Range: $\leq 570^{\circ}\text{C}$



WZ41H 美标波纹式闸阀
API corrugated gate valve

公称口径: 1/2"~20"
公称压力: PN150~900Lb
适用介质: 水、蒸汽、油品
适用温度: $\leq 425^{\circ}\text{C}$

Nominal Diameter: 1/2"~20"
Nominal Pressure: PN150~900Lb
Mediums: Water, steam, oil
Temperature Range: $\leq 425^{\circ}\text{C}$



Z2 仿41Y 带吹扫孔闸阀
With purge holes gate valve

公称口径: DN40~1200mm
公称压力: PN1.0~16.0MPa
适用介质: 水、蒸汽、油品
适用温度: $\leq 425^{\circ}\text{C}$

Nominal Diameter: DN40~1200mm
Nominal Pressure: PN1.0~16.0MPa
Mediums: Water, steam, oil
Temperature Range: $\leq 425^{\circ}\text{C}$



Z941Y 排渣闸阀
Dregs gate valve

公称口径: DN50~500mm
公称压力: PN1.0~6.4MPa
适用介质: 水、蒸汽、油品
适用温度: $\leq 425^{\circ}\text{C}$

Nominal Diameter: DN50~500mm
Nominal Pressure: PN1.0~6.4MPa
Mediums: Water, steam, oil
Temperature Range: $\leq 425^{\circ}\text{C}$

闸阀系列
Gate Valve Series



DKZ41H 真空隔离闸板阀
Thevacuum gatevalve

公称通径: DN50~1000mm
公称压力: PN1.0~10.0MPa
适用介质: 水、蒸气、油品
适用温度: ≤200°C

Nominal Diameter:DN50~1000mm
Nominal Pressure:PN1.0~10.0MPa
Mediums:Water,steam,oil
Temperature Range:≤200°C



Z673X 浆液阀
Slurryvalve

公称通径: DN50~600mm
公称压力: PN0.6~1.6MPa
适用介质: 水、纸浆
适用温度: ≤100°C

Nominal Diameter:DN50~600mm
Nominal Pressure:PN0.6~1.6MPa
Mediums:Water,pulp
Temperature Range:≤100°C



Z943F 带导流孔平板闸阀
Withdeflectorflatgatevalve

公称通径: DN50~1000mm
公称压力: PN1.0~6.4MPa
适用介质: 水、蒸气、油品
适用温度: ≤180°C

Nominal Diameter:DN50~1000mm
Nominal Pressure:PN1.0~6.4MPa
Mediums:Water,steam,oil
Temperature Range:≤180°C



Z43F 平板闸阀
Flat gate valve

公称通径: DN25~1000mm
公称压力: PN1.0~6.4MPa
适用介质: 水、蒸气、油品
适用温度: ≤180°C

Nominal Diameter:DN25~1000mm
Nominal Pressure:PN1.0~6.4MPa
Mediums:Water,steam,oil
Temperature Range:≤180°C



WZ45X 高压平板闸阀
Pressure plate valve

公称通径: DN40~300mm
公称压力: PN1.6~32MPa
适用介质: 水、油、天然气
适用温度: ≤120°C

Nominal Diameter:DN40~300mm
Nominal Pressure:PN1.6~32MPa
Mediums:Water,oil,naturalgas
Temperature Range:≤120°C



PZ73H 刀型闸阀
Knife gate valve

公称通径: DN50~600mm
公称压力: PN0.6~1.6MPa
适用介质: 水、纸浆
适用温度: ≤100°C

Nominal Diameter:DN50~600mm
Nominal Pressure:PN0.6~1.6MPa
Mediums:Water,pup
Temperature Range:≤100°C



Globe Valve Series

截止阀的阀瓣一旦从关闭位置移开，它的阀座和阀瓣密封面之间就不再接触，因而它的密封面机械磨损很小，故其密封性能是很好。阀座和阀瓣比较容易修理或更换，而且在修理或更换密封元件时无需把整个阀门从管线上拆卸下来，这在阀门和管线焊成一体的场合是非

截止阀的使用极为普遍，但由于开启和关闭力矩较大、结构长度较长，通常公称尺寸都限制在250mm 以下，也有到400mm 的，但选

截止阀系列
Globe Valve Series

截止阀系列
Globe Valve Series



J41H 中低压截止阀
Medium and low pressure globe valve

公称口径: DN15~600mm
公称压力: PN1.0~4.0MPa
适用介质: 水、蒸汽、油品
适用温度: ≤425°C

Nominal Diameter: DN15~600mm

Nominal Pressure: PN1.0~4.0MPa

Mediums: Water, steam, oil

Temperature Range: ≤425°C



J41H 高压截止阀
High pressure globe valve

公称口径: DN15~600mm
公称压力: PN6.4~16.0MPa
适用介质: 水、蒸汽、油品
适用温度: ≤425°C

Nominal Diameter: DN15~600mm

Nominal Pressure: PN6.4~16.0MPa

Mediums: Water, steam, oil

Temperature Range: ≤425°C



J41H/W 美标截止阀
API globe valve

公称口径: 1/2"~20"
公称压力: 150~1500Lb
适用介质: 水、蒸汽、油品
适用温度: ≤425°C

Nominal Diameter: 1/2"~20"

Nominal Pressure: 150~1500Lb

Mediums: Water, steam, oil

Temperature Range: ≤425°C



J41S 法兰柱塞截止阀
Flange plug globe valve

公称口径: DN15~450mm
公称压力: PN1.0~4.0MPa
适用介质: 水、蒸汽、油品
适用温度: ≤250°C

Nominal Diameter: DN15~450mm

Nominal Pressure: PN1.0~4.0MPa

Mediums: Water, steam, oil

Temperature Range: ≤250°C



J941H 电动截止阀
Electric globe valve

公称口径: DN15~600mm
公称压力: PN1.0~16.0MPa
适用介质: 水、蒸汽、油品
适用温度: ≤425°C

Nominal Diameter: DN15~600mm

Nominal Pressure: PN1.0~16.0MPa

Mediums: Water, steam, oil

Temperature Range: ≤425°C



J41VE/Y 伞齿轮截止阀
Bevel gear globe valve

公称口径: DN200~600mm
公称压力: PN1.0~16.0MPa
适用介质: 水、蒸汽、油品
适用温度: ≤425°C

Nominal Diameter: DN200~600mm

Nominal Pressure: PN1.0~16.0MPa

Mediums: Water, steam, oil

Temperature Range: ≤425°C



J41H 液化气截止阀
Lpg globe valve

公称口径: DN50~200mm
公称压力: PN1.0~4.0MPa
适用介质: 水、蒸汽、油品
适用温度: ≤80°C

Nominal Diameter: DN50~200mm

Nominal Pressure: PN1.0~4.0MPa

Mediums: Water, steam, oil

Temperature Range: ≤80°C



J41W 氧气截止阀
Oxygen globe valve

公称口径: DN32~200mm
公称压力: PN1.0~6.4MPa
适用介质: 水、蒸汽、油品
适用温度: ≤200°C

Nominal Diameter: DN32~200mm

Nominal Pressure: PN1.0~6.4MPa

Mediums: Water, steam, oil

Temperature Range: ≤200°C



UJ41H 高压柱塞截止阀
High pressure plug globe valve

公称口径: DN15~400mm
公称压力: PN1.0~10.0MPa
适用介质: 水、蒸汽、油品
适用温度: ≤350°C

Nominal Diameter: DN15~400mm

Nominal Pressure: PN1.0~10.0MPa

Mediums: Water, steam, oil

Temperature Range: ≤350°C



J41W 不锈钢截止阀
Stainless steel globe valve

公称口径: DN15~600mm
公称压力: PN1.0~16.0MPa
适用介质: 水、蒸汽、油品
适用温度: ≤425°C

Nominal Diameter: DN15~600mm

Nominal Pressure: PN1.0~16.0MPa

Mediums: Water, steam, oil

Temperature Range: ≤425°C



WJ41H 波纹管截止阀
Bellows globe valve

公称口径: DN15~400mm
公称压力: PN1.0~6.4MPa
适用介质: 水、蒸汽、油品
适用温度: ≤425°C

Nominal Diameter: DN15~400mm

Nominal Pressure: PN1.0~6.4MPa

Mediums: Water, steam, oil

Temperature Range: ≤425°C



WJ451W/HY 型直流式波纹管截止阀
Y-type direct current bellows globe valve

公称口径: DN15~250mm
公称压力: PN1.0~6.4MPa
适用介质: 水、蒸汽、油品
适用温度: ≤350°C

Nominal Diameter: DN15~250mm

Nominal Pressure: PN1.0~6.4MPa

Mediums: Water, steam, oil

Temperature Range: ≤350°C

截止阀系列
Globe Valve Series

截止阀系列
Globe Valve Series



J41F46 衬氟截止阀
Lined globe valve

公称口径: DN40~300mm
公称压力: PN1.6MPa
适用介质: 水、酸性
适用温度: ≤150°C

Nominal Diameter: DN40~300mm
Nominal Pressure: PN1.6MPa
Mediums: Water, acid
Temperature Range: ≤150°C



J45F46 直流式截止阀
DC type globe valve

公称口径: DN40~350mm
公称压力: PN1.6MPa
适用介质: 水、酸性
适用温度: ≤150°C

Nominal Diameter: DN40~350mm
Nominal Pressure: PN1.6MPa
Mediums: Water, acid
Temperature Range: ≤150°C



HG5-81-1 手动上展式放料阀
Manual upward spreading discharge valve

公称口径: DN50~400mm
公称压力: PN1.0~6.4MPa
适用介质: 水、蒸汽、油品
适用温度: ≤425°C

Nominal Diameter: DN50~400mm
Nominal Pressure: PN1.0~6.4MPa
Mediums: Water, steam, oil
Temperature Range: ≤425°C



HG5-81-2 手动下展式放料阀
Manual downward spreading discharge valve

公称口径: DN50~400mm
公称压力: PN1.0~6.4MPa
适用介质: 水、蒸汽、油品
适用温度: ≤425°C

Nominal Diameter: DN50~400mm
Nominal Pressure: PN1.0~6.4MPa
Mediums: Water, steam, oil
Temperature Range: ≤425°C



L44Y 油田专用角式截止阀
Diagonal globe valve

公称口径: DN15~300mm
公称压力: PN1.6~32.0MPa
适用介质: 水、蒸汽、油品
适用温度: ≤425°C

Nominal Diameter: DN15~300mm
Nominal Pressure: PN1.6~32.0MPa
Mediums: Water, steam, oil
Temperature Range: ≤425°C



J44H 角式截止阀
Diagonal globe valve

公称口径: DN15~300mm
公称压力: PN1.6~32.0MPa
适用介质: 水、蒸汽、油品
适用温度: ≤425°C

Nominal Diameter: DN15~300mm
Nominal Pressure: PN1.6~32.0MPa
Mediums: Water, steam, oil
Temperature Range: ≤425°C



J41H 法兰锻钢截止阀
Forged steel globe valve

公称口径: DN15~50mm
公称压力: PN1.6~32.0MPa
适用介质: 水、蒸汽、油品
适用温度: ≤425°C

Nominal Diameter: DN15~50mm
Nominal Pressure: PN1.6~32.0MPa
Mediums: Water, steam, oil
Temperature Range: ≤425°C



J61H 锻钢截止阀
Forged steel globe valve

公称口径: DN10~50mm
公称压力: PN1.6~32.0MPa
适用介质: 水、蒸汽、油品
适用温度: ≤425°C

Nominal Diameter: DN10~50mm
Nominal Pressure: PN1.6~32.0MPa
Mediums: Water, steam, oil
Temperature Range: ≤425°C



DJ41W 低温截止阀
Low temperature globe valve

公称口径: DN15~400mm
公称压力: PN1.0~10.0MPa
适用介质: 水、蒸汽、油品
适用温度: ≥-196°C

Nominal Diameter: DN15~400mm
Nominal Pressure: PN1.0~10.0MPa
Mediums: Water, steam, oil
Temperature Range: ≥-196°C



BJ45W 直流式保温截止阀
Direct current insulated globe valve

公称口径: DN40~300mm
公称压力: PN1.0~10.0MPa
适用介质: 水、硝酸、尿素
适用温度: ≤425°C

Nominal Diameter: DN40~300mm
Nominal Pressure: PN1.0~10.0MPa
Mediums: Water, nitrate, urea
Temperature Range: ≤425°C



JY41F 氯气专用截止阀
Cut-off valve special for chlorine

公称口径: DN50~300mm
公称压力: PN1.6~4.0MPa
适用介质: 氯气、液氯
适用温度: ≤200°C

Nominal Diameter: DN50~300mm
Nominal Pressure: PN1.6~4.0MPa
Mediums: Chlorine, chlorine
Temperature Range: ≤200°C



BJ41W 夹套温截止阀
Jacket insulation valve

公称口径: DN50~200mm
公称压力: PN1.6~6.4MPa
适用介质: 水、蒸汽、油品
适用温度: ≤425°C

Nominal Diameter: DN50~200mm
Nominal Pressure: PN1.6~6.4MPa
Mediums: Water, steam, oil
Temperature Range: ≤425°C

截止阀系列
Globe Valve Series



J961Y 电站截止阀
Power station globe valve

公称口径: DN50~600mm
公称压力: PN1.6~32.0MPa
适用介质: 水、蒸汽、油品
适用温度: ≤570°C

Nominal Diameter: DN50~600mm
Nominal Pressure: PN1.6~32.0MPa
Mediums: Water, steam, oil
Temperature Range: ≤570°C



DKJ41H 真空隔离截止阀
The vacuum isolation valve

公称口径: DN50~600mm
公称压力: PN1.6~10.0MPa
适用介质: 水、蒸汽、油品
适用温度: ≤425°C

Nominal Diameter: DN50~600mm
Nominal Pressure: PN1.6~10.0MPa
Mediums: Water, steam, oil
Temperature Range: ≤425°C



KJ41F 抗生素截止阀
Antibiotic stop valve

公称口径: DN50~600mm
公称压力: PN1.6~10.0MPa
适用介质: 水、蒸汽、油品
适用温度: ≤200°C

Nominal Diameter: DN50~600mm
Nominal Pressure: PN1.6~10.0MPa
Mediums: Water, steam, oil
Temperature Range: ≤200°C



FJ41H 节流截止放空阀
Throttle stop vent valve

公称口径: DN50~200mm
公称压力: PN1.6~16.0MPa
适用介质: 水、蒸汽、油品
适用温度: ≤350°C

Nominal Diameter: DN50~200mm
Nominal Pressure: PN1.6~16.0MPa
Mediums: Water, steam, oil
Temperature Range: ≤350°C



JLH41H 多功能截止阀
Multifunctional valve

公称口径: DN50~400mm
公称压力: PN1.6~4.0MPa
适用介质: 水、蒸汽、油品
适用温度: ≤150°C

Nominal Diameter: DN50~400mm
Nominal Pressure: PN1.6~4.0MPa
Mediums: Water, steam, oil
Temperature Range: ≤150°C



GJ41X 手动铝合金管夹阀
Manual aluminum alloy pipe clamp valve

公称口径: DN50~300mm
公称压力: PN1.6~4.0MPa
适用介质: 矿浆、磨料、干湿型粉尘类
适用温度: ≤150°C

Nominal Diameter: DN50~300mm
Nominal Pressure: PN1.6~4.0MPa
Mediums: Slurry, abrasive, dry and wet type dust
Temperature Range: ≤150°C



Check Valve Series

4. 阀体材料品种齐全。垫片可根据实际工况或用户要求合理选配。能适用于各种压力、温度及介质工况。

止回阀系列
Check valve series



H41H 国标升降式止回阀
GB lift checkvalve

公称口径: DN15~500mm
公称压力: PN1.0~16.0MPa
适用介质: 水、蒸汽、油品
适用温度: ≤425℃

Nominal Diameter:DN15~500mm
Nominal Pressure:PN1.0~16.0MPa
Mediums:Water,steam,oil
Temperature Range:≤425℃



H44H 国标旋启式止回阀
GBswing checkvalve

公称口径: DN15~600mm
公称压力: PN1.0~16.0MPa
适用介质: 水、蒸汽、油品
适用温度: ≤425℃

Nominal Diameter:DN15~600mm
Nominal Pressure:PN1.0~16.0MPa
Mediums:Water,steam,oil
Temperature Range:≤425℃



H71 对夹式止回阀
Wafertype checkvalve

公称口径: DN15~600mm
公称压力: PN1.0~4.0MPa
适用介质: 水、蒸汽、油品
适用温度: ≤425℃

Nominal Diameter:DN15~600mm
Nominal Pressure:PN1.0~4.0MPa
Mediums:Water,steam,oil
Temperature Range:≤425℃



H74 对夹式止回阀
Water checkvalve

公称口径: DN15~600mm
公称压力: PN1.0~4.0MPa
适用介质: 水、蒸汽、油品
适用温度: ≤425℃

Nominal Diameter:DN15~600mm
Nominal Pressure:PN1.0~4.0MPa
Mediums:Water,steam,oil
Temperature Range:≤425℃



H42H 立式止回阀
GBvertical checkvalve

公称口径: DN15~500mm
公称压力: PN1.0~16.0MPa
适用介质: 水、蒸汽、油品
适用温度: ≤425℃

Nominal Diameter:DN15~500mm
Nominal Pressure:PN1.0~16.0MPa
Mediums:Water,steam,oil
Temperature Range:≤425℃



H44W/H 美标旋启式止回阀
APIswing check valve

公称口径: 1/2'~20'
公称压力: 150~1500Lb
适用介质: 水、蒸汽、油品
适用温度: ≤425℃

Nominal Diameter:1/2'~20'
Nominal Pressure:150~1500Lb
Mediums:Water,steam,oil
Temperature Range:≤425℃



H61H 美标低温锻钢止回阀
APIlowtemperature forged checkvalve

公称口径: 1/2'~2'
公称压力: 150~300Lb
适用介质: 水、蒸汽、油品
适用温度: ≥-196℃

Nominal Diameter:1/2'~2'
Nominal Pressure:150~300Lb
Mediums:Water,steam,oil
Temperature Range:≥-196℃



H72H 对夹式高压止回阀
Wafer high checkvalve

公称口径: DN50~100mm
公称压力: PN10~32MPa
适用介质: 水、蒸汽、油品
适用温度: ≤425℃

Nominal Diameter:DN50~100mm
Nominal Pressure:PN10~32MPa
Mediums:Water,steam,oil
Temperature Range:≤425℃



H42H美标立式止回阀
American standard vertical check valve

公称口径: 1/2'~12'
公称压力: 150~900Lb
适用介质: 水、蒸汽、油品
适用温度: ≤425℃

Nominal Diameter:1/2'~12'
Nominal Pressure:150~900Lb
Mediums:Water,steam,oil
Temperature Range:≤425℃



H76W对夹式止回阀
Wafer checkvalve

公称口径: DN40~800mm
公称压力: PN1.0~4.0MPa
适用介质: 水、蒸汽、油品
适用温度: ≤425℃

Nominal Diameter:DN40~800mm
Nominal Pressure:PN1.0~4.0MPa
Mediums:Water,steam,oil
Temperature Range:≤425℃



H64HY 自密封旋启式止回阀
Self sealingswing checkvalve

公称口径: 2"~36"
公称压力: 900~2500Lb
适用介质: 水、蒸汽、油品
适用温度: ≤425℃

Nominal Diameter:2'~36'
Nominal Pressure:900~2500Lb
Mediums:Water,steam,oil
Temperature Range:≤425℃



H664Y 抽气止回阀
Exhaust checkvalve

公称口径: DN50~1000mm
公称压力: PN1.6~10.0MPa
适用介质: 水、蒸汽、油品
适用温度: ≤425℃

Nominal Diameter:DN50~1000mm
Nominal Pressure:PN1.6~10.0MPa
Mediums:Water,steam,oil
Temperature Range:≤425℃

止回阀系列
Check valve series

止回阀系列
Check valve series



泵保护阀、最小流量阀
Pump protection valve, minimum flow valve

公称口径: DN40~300mm
公称压力: PN1.0~32.0MPa
适用介质: 水、蒸汽、油品
适用温度: ≤425°C

Nominal Diameter: DN40~300mm
Nominal Pressure: PN1.0~32.0MPa
Mediums: Water, steam, oil
Temperature Range: ≤425°C



CKH643H 快速关闭抽汽式止回阀
Fast closing steam check valve

公称口径: DN100~1000mm
公称压力: PN1.0~4.0MPa
适用介质: 水、蒸汽、油品
适用温度: ≤425°C

Nominal Diameter: DN100~1000mm
Nominal Pressure: PN1.0~4.0MPa
Mediums: Water, steam, oil
Temperature Range: ≤425°C



H42F/X衬氟止回阀
Lined check valve

公称口径: DN40~300mm
公称压力: PN1.6MPa
适用介质: 水、酸性
适用温度: ≤150°C

Nominal Diameter: DN40~300mm
Nominal Pressure: PN1.6MPa
Mediums: Water, acid
Temperature Range: ≤150°C



BH44H保温止回阀
Insulation check valve

公称口径: DN50~300mm
公称压力: PN1.6~16.0MPa
适用介质: 水、蒸汽、油品
适用温度: ≤425°C

Nominal Diameter: DN50~300mm
Nominal Pressure: PN1.6~16.0MPa
Mediums: Water, steam, oil
Temperature Range: ≤425°C



H44F46衬氟立式止回阀
Fluorine vertical check valve

公称口径: DN40~500mm
公称压力: PN1.0~2.5MPa
适用介质: 水、酸性
适用温度: ≤150°C

Nominal Diameter: DN40~500mm
Nominal Pressure: PN1.0~2.5MPa
Mediums: Water, acid
Temperature Range: ≤150°C



HY41W氢气止回阀
Discharge check valve

公称口径: DN50~200mm
公称压力: PN1.0~2.5MPa
适用介质: 水、蒸汽、油品
适用温度: ≤150°C

Nominal Diameter: DN50~200mm
Nominal Pressure: PN1.0~2.5MPa
Mediums: Water, steam, oil
Temperature Range: ≤150°C



Ball Valve Series

的比例应该是这样的, 即当球旋转90度时, 在进、出口处应全部呈现球面, 从而截断流动。

球阀系列
Ball Valve series

球阀系列
Ball Valve series



Q41F 铸钢法兰球阀
Caststeel flange ballvalve

公称口径: DN15~200mm
公称压力: PN1.0~6.4MPa

适用介质: 水、蒸汽、油品
适用温度: ≤150°C

Nominal Diameter:DN15~200mm
Nominal Pressure:PN1.0~6.4MPa
Mediums:Water,steam,oil
Temperature Range:≤150°C



Q41F 高平台球阀
High platform ballvalve

公称口径: DN50~200mm
公称压力: PN1.0~6.4MPa

适用介质: 水、蒸汽、油品、酸类
适用温度: ≤150°C

Nominal Diameter:DN50~200mm
Nominal Pressure:PN1.0~6.4MPa
Mediums:Water,steam,oil,acid
Temperature Range:≤150°C



BQ41F 保温球阀
Insulation ball valve

公称口径: DN50~250mm
公称压力: PN1.0~6.4MPa

适用介质: 水、硝酸、尿素
适用温度: ≤150°C

Nominal Diameter:DN50~250mm
Nominal Pressure:PN1.0~6.4MPa
Mediums:Water,nitrate,urea
Temperature Range:≤150°C



Q71F 不锈钢薄型球阀
Thin stainless

公称口径: DN15~150mm
公称压力: PN1.0~4.0MPa

适用介质: 水、蒸气、油品
适用温度: ≤150°C

Nominal Diameter:DN15~150mm
Nominal Pressure:PN1.0~4.0MPa
Mediums:Water,steam,oil
Temperature Range:≤150°C



Q347F/H 蜗轮固定球阀
Wormgearfixedballvalve

公称口径: DN50~700mm
公称压力: PN1.0~6.4MPa

适用介质: 水、蒸气、油品
适用温度: ≤150~425°C

Nominal Diameter:DN50~700mm
Nominal Pressure:PN1.0~6.4MPa
Mediums:Water,steam,oil
Temperature Range:≤150~425°C



Q347H 高压锻钢球阀
High forgedballvalve

公称口径: DN50~600mm
公称压力: PN10.0~32.0MPa

适用介质: 水、蒸气、油品
适用温度: ≤425°C

Nominal Diameter:DN50~600mm
Nominal Pressure:PN10.0~32.0MPa
Mediums:Water,steam,oil
Temperature Range:≤425°C



Q41M 一体式球阀
One type ball

公称口径: DN15~100mm
公称压力: PN1.0~4.0MPa

适用介质: 水、蒸气、油品
适用温度: ≤350°C

Nominal Diameter:DN15~100mm
Nominal Pressure:PN1.0~4.0MPa
Mediums:Water,steam,oil
Temperature Range:≤350°C



清管阀
Pig valve

公称口径: DN100~250mm
公称压力: PN1.0~10.0MPa

适用介质: 水、蒸气、油品
适用温度: ≤425°C

Nominal Diameter:DN100~250mm
Nominal Pressure:PN1.0~10.0MPa
Mediums:Water,steam,oil
Temperature Range:≤425°C



Q41F 衬氟球阀
Lined ball valve

公称口径: DN15~250mm
公称压力: PN1.6MPa

适用介质: 水、酸性
适用温度: ≤150°C

Nominal Diameter:DN15~250mm
Nominal Pressure:PN1.6MPa
Mediums:Water,acid
Temperature Range:≤150°C



Q41TC 陶瓷球阀
Ceramic ball valve

公称口径: DN50~200mm
公称压力: PN1.0~6.4MPa

适用介质: 煤粉、煤渣、粉状颗粒
适用温度: ≤350°C

Nominal Diameter:DN50~200mm
Nominal Pressure:PN1.0~6.4MPa
Mediums:Coalslag,powder particles
Temperature Range:≤350°C



水电进水球阀
Water inletvalve

公称口径: DN50~300mm
公称压力: PN1.0~4.0MPa

适用介质: 水、蒸汽、油品
适用温度: ≤150°C

Nominal Diameter:DN50~300mm
Nominal Pressure:PN1.0~4.0MPa
Mediums:Water,steam,oil
Temperature Range:≤150°C



Q347F 燃气球阀
Gas ball valve

公称口径: DN50~500mm
公称压力: PN1.0~2.5MPa

适用介质: 液化气、天然气等
适用温度: ≤150°C

Nominal Diameter:DN50~500mm
Nominal Pressure:PN1.0~2.5MPa
Mediums:Liquefied gas,natural gas,etc.
Temperature Range:≤150°C

球阀系列
Ball Valve series

球阀系列
Ball Valve series



Q41F 天然气专用球阀
Natural gas ball valve

公称口径: DN15~200mm
公称压力: PN1.0~2.5MPa
适用介质: 液化气、天然气等
适用温度: ≤80°C

Nominal Diameter: DN15~200mm
Nominal Pressure: PN1.0~2.5MPa
Mediums: Liquefied gas, natural gas, etc.
Temperature Range: ≤80°C



Q61F 供热专用焊接球阀
Heating special welding ball valve

公称口径: DN15~300mm
公称压力: PN1.0~2.5MPa
适用介质: 水、气、油品、天然气
适用温度: ≤150°C

Nominal Diameter: DN15~300mm
Nominal Pressure: PN1.0~2.5MPa
Mediums: Water, gas, oil, natural gas
Temperature Range: ≤150°C



PQ340F/H 偏心半球阀
Eccentric hemisphere valve

公称口径: DN40~2000mm
公称压力: PN1.0~4.0MPa
适用介质: 煤灰、煤粉、泥浆等
适用温度: ≤150~425°C

Nominal Diameter: DN40~2000mm
Nominal Pressure: PN1.0~4.0MPa
Mediums: Coal ash, coal powder, mud, etc.
Temperature Range: ≤150~425°C



Q44F 三通球阀
The 3-way ball valve

公称口径: DN15~400mm
公称压力: PN1.0~2.5MPa
适用介质: 水、蒸汽、油品
适用温度: ≤150°C

Nominal Diameter: DN15~400mm
Nominal Pressure: PN1.0~2.5MPa
Mediums: Water, steam, oil
Temperature Range: ≤150°C



Q61F 埋地式热力球阀(短体型)
Buried type heat ball valve (short form)

公称口径: DN15~300mm
公称压力: PN1.0~2.5MPa
适用介质: 水、气、油品、天然气
适用温度: ≤150°C

Nominal Diameter: DN15~300mm
Nominal Pressure: PN1.0~2.5MPa
Mediums: Water, gas, oil, natural gas
Temperature Range: ≤150°C



Q367F 蜗轮全焊接球阀
Worm gear all welded ball valve

公称口径: DN150~1400mm
公称压力: PN1.0~2.5MPa
适用介质: 水、气、油品、天然气
适用温度: ≤150°C

Nominal Diameter: DN150~1400mm
Nominal Pressure: PN1.0~2.5MPa
Mediums: Water, gas, oil, natural gas
Temperature Range: ≤150°C



Q47F/H 轨道球阀
Track ball valve

公称口径: DN50~700mm
公称压力: PN1.0~4.0MPa
适用介质: 水、蒸汽、油品
适用温度: ≤150~425°C

Nominal Diameter: DN50~700mm
Nominal Pressure: PN1.0~4.0MPa
Mediums: Water, steam, oil
Temperature Range: ≤150~425°C



Q347Y 斜面球阀
Inclined ball valve

公称口径: DN50~300mm
公称压力: PN1.0~6.4MPa
适用介质: 水、蒸汽、油品
适用温度: ≤425°C

Nominal Diameter: DN50~300mm
Nominal Pressure: PN1.0~6.4MPa
Mediums: Water, steam, oil
Temperature Range: ≤425°C



MQ61F 缩径排气埋地式球阀(长体型)
Shrink diameter exhaust buried ball valve (long body)

公称口径: DN15~50mm
公称压力: PN1.0~2.5MPa
适用介质: 水、气、油品、天然气
适用温度: ≤150°C

Nominal Diameter: DN15~50mm
Nominal Pressure: PN1.0~2.5MPa
Mediums: Water, gas, oil, natural gas
Temperature Range: ≤150°C



Q961F 全焊接球阀
Full welded ball valve

公称口径: DN15~1200mm
公称压力: PN1.0~2.5MPa
适用介质: 水、蒸汽、油品
适用温度: ≤150°C

Nominal Diameter: DN15~1200mm
Nominal Pressure: PN1.0~2.5MPa
Mediums: Water, steam, oil
Temperature Range: ≤150°C



Q41F 低温球阀
Low-temperature Ball Valve

公称口径: DN15~400mm
公称压力: PN1.0~6.4MPa
适用介质: 水、蒸汽、油品
适用温度: ≥-196°C

Nominal Diameter: DN15~400mm
Nominal Pressure: PN1.0~6.4MPa
Mediums: Water, steam, oil
Temperature Range: ≥-196°C



Q41F/H 氧气球阀
Oxygen ball valve

公称口径: DN50~200mm
公称压力: PN1.0~4.0MPa
适用介质: 水、氧气
适用温度: ≤150°C

Nominal Diameter: DN50~200mm
Nominal Pressure: PN1.0~4.0MPa
Mediums: Water, oxygen
Temperature Range: ≤150°C

球阀系列

Ball Valve series



Q647MF 卸灰球阀
Ash discharge ball valve

公称通径: DN50~800mm
公称压力: PN1.0~2.5MPa
适用介质: 水、蒸汽、油品
适用温度: ≤350°C

Nominal Diameter: DN50~800mm
Nominal Pressure: PN1.0~2.5MPa
Mediums: Water, steam, oil
Temperature Range: ≤350°C



Q641F 气动球阀
Pneumatic ball valve

公称通径: DN15~250mm
公称压力: PN 1.0~6.4MPa
适用介质: 水、蒸汽、油品
适用温度: ≤150°C

Nominal Diameter: DN15~250mm
Nominal Pressure: PN1.0~6.4MPa
Mediums: Water, steam, oil
Temperature Range: ≤150°C



Q941F 电动防爆球阀
Electric explosion ball valve

公称通径: DN15~250mm
公称压力: PN1.0~6.4MPa
适用介质: 水、蒸汽、油品
适用温度: ≤150°C

Nominal Diameter: DN15~250mm
Nominal Pressure: PN1.0~6.4MPa
Mediums: Water, steam, oil
Temperature Range: ≤150°C



UPVC 气动塑料球阀
UPVC pneumatic plastic ball valve

公称通径: DN25~100mm
公称压力: PN1.0MPa
适用介质: PVC 的兼容食品工业化学溶剂
适用温度: ≤60°C

Nominal Diameter: DN25~100mm
Nominal Pressure: PN1.0MPa
Mediums: PVC compatible chemical or is
Temperature Range: ≤60°C



Q947H V型球阀
V-Ball Valve

公称通径: DN5~500mm
公称压力: PN1.0~2.5MPa
适用介质: 水、蒸汽、油品
适用温度: ≤425°C

Nominal Diameter: DN5~500mm
Nominal Pressure: PN1.0~2.5MPa
Mediums: Water, steam, oil
Temperature Range: ≤425°C



XQ(3)47Y 偏心球阀
Eccentric rotary valve

公称通径: DN50~600mm
公称压力: PN1.6~2.5MPa
适用介质: 水、蒸汽、油品
适用温度: ≤425°C

Nominal Diameter: DN 50~600mm
Nominal Pressure: PN1.6~2.5MPa
Mediums: Water, steam, oil
Temperature Range: ≤425°C



Butterfly Valve Series

- 1.
 2. 压降: 如果压降太大, 会增加能量消耗。但是, 应该知道的是, 阀门并不是管道系统产生压降的唯一因素, 导致压降的产生还有下
- 此导致整个管道系统更加昂贵。所以, 考虑到阀门重量, 就能够节约整个管道系统的成本。
- 5.
 6. 操作简便: 蝶阀从开启到关闭只需要旋转14转(90度)。而闸阀和截止阀需要旋转很多次才能将阀门从开启状态转变为关闭状态。

蝶阀系列
Butterfly Valve Series



D373H 硬密封对夹蝶阀
Hardseal on the clip valve

公称通径: DN50~2000mm
公称压力: PN1.0~2.5MPa
适用介质: 水、蒸汽、油品
适用温度: ≤425°C

Nominal Diameter: DN50~2000mm

Nominal Pressure: PN1.0~2.5MPa

Mediums: Water, steam and oil

Temperature Range: ≤425°C



D343H 硬密封法兰蝶阀
Hardsealing flange butterfly valve

公称通径: DN50~2000mm
公称压力: PN1.0~2.5MPa
适用介质: 水、蒸汽、油品
适用温度: ≤425°C

Nominal Diameter: DN50~2000mm

Nominal Pressure: PN1.0~2.5MPa

Mediums: Water, steam and oil

Temperature Range: ≤425°C



D343H 耐高温蝶阀
High-temperature butterfly valve

公称通径: DN50~2000mm
公称压力: PN1.0~4.0MPa
适用介质: 水、蒸汽、油品
适用温度: ≤540°C

Nominal Diameter: DN50~2000mm

Nominal Pressure: PN1.0~4.0MPa

Mediums: Water, steam, oil

Temperature Range: ≤540°C



D341W 通风蝶阀
Ventilation butterfly valve

公称通径: DN50~3000mm
公称压力: PN0.05~0.6MPa
适用介质: 含尘气体、烟道气
适用温度: ≤350°C

Nominal Diameter: DN50~3000mm

Nominal Pressure: PN0.05~0.6MPa

Mediums: Dust containing gas, fume gas

Temperature Range: ≤350°C



LTD373H 不锈钢多层次蝶阀
Multi-level stainless steel butterfly valve

公称通径: DN50~2000mm
公称压力: PN1.0~2.5MPa
适用介质: 水、蒸汽、油品
适用温度: ≤425°C

Nominal Diameter: DN50~2000mm

Nominal Pressure: PN1.0~2.5MPa

Mediums: Water, steam, oil

Temperature Range: ≤425°C



D363H 偏心对焊蝶阀
Threeeccentric butterfly valve

公称通径: DN50~2000mm
公称压力: PN1.0~2.5MPa
适用介质: 水、蒸汽、油品
适用温度: ≤425°C

Nominal Diameter: DN50~2000mm

Nominal Pressure: PN1.0~2.5MPa

Mediums: Water, oil, steam

Temperature Range: ≤425°C



GIQ 气动真空蝶阀
Pneumatic vacuum butterfly valve

公称通径: DN40~250mm
公称压力: PN0.6~1.6MPa
适用介质: 纯净空气和非腐蚀性气体
适用温度: ≤120°C

Nominal Diameter: DN40~250mm

Nominal Pressure: PN0.6~1.6MPa

Mediums: coransae asnsn

Temperature Range: ≤120°C



TD941W 电动法兰通风蝶阀
Electric butterfly valve

公称通径: DN50~3000mm
公称压力: PN0.05~0.6MPa
适用介质: 煤气、烟气等
适用温度: ≤350°C

Nominal Diameter: DN50~3000mm

Nominal Pressure: PN0.05~0.6MPa

Mediums: Gas, smoke, etc.

Temperature Range: ≤350°C



D341X 加长杆法兰蝶阀
Extension rod flange butterfly valve

公称通径: DN50~2000mm
公称压力: PN1.0~1.6MPa
适用介质: 水、蒸汽、油品
适用温度: ≤80°C

Nominal Diameter: DN50~2000mm

Nominal Pressure: PN1.0~1.6MPa

Mediums: Water, steam, oil

Temperature Range: ≤80°C



SD343X 伸缩偏心法兰蝶阀
Telescopic eccentric flanged butterfly valve

公称通径: DN100~3000mm
公称压力: PN1.0~1.6MPa
适用介质: 水、蒸汽、油品
适用温度: ≤80°C

Nominal Diameter: DN100~3000mm

Nominal Pressure: PN1.0~1.6MPa

Mediums: Water, steam, oil

Temperature Range: ≤80°C



D643H 气动硬密封法兰蝶阀
Pneumatic hardsealing flange butterfly valve

公称通径: DN50~2000mm
公称压力: PN1.0~2.5MPa
适用介质: 水、蒸汽、油品
适用温度: ≤425°C

Nominal Diameter: DN50~2000mm

Nominal Pressure: PN1.0~2.5MPa

Mediums: Water, steam, oil

Temperature Range: ≤425°C



D943H 电动法兰硬密封蝶阀
Electric flange seal butterfly valve

公称通径: DN50~2000mm
公称压力: PN1.0~2.5MPa
适用介质: 水、弱腐蚀性介质
适用温度: ≤425°C

Nominal Diameter: DN50~2000mm

Nominal Pressure: PN1.0~2.5MPa

Mediums: Water, weakly corrosive medium

Temperature Range: ≤425°C

蝶阀系列
Butterfly Valve Series

蝶阀系列
Butterfly Valve Series



D342X 双偏心法兰蝶阀
Double eccentric flange butterfly valve

公称通径: DN100~3000mm
公称压力: PN1.0~1.6MPa
适用介质: 水、蒸汽、油品
适用温度: ≤80°C

Nominal Diameter: DN100~3000mm
Nominal Pressure: PN1.0~1.6MPa
Mediums: Water, steam, oil
Temperature Range: ≤80°C



HD743X 液控缓闭止回蝶阀
Hydraulic slow-close butterfly check valve

公称通径: DN50~3000mm
公称压力: PN1.0~2.5MPa
适用介质: 水、蒸汽、油品
适用温度: ≤80°C

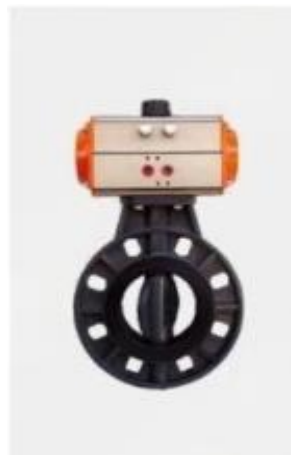
Nominal Diameter: DN50~3000mm
Nominal Pressure: PN1.0~2.5MPa
Mediums: Water, steam, oil
Temperature Range: ≤80°C



HD743X 重锤锁闭式液控止回蝶阀
Hammer locking hydraulic check valve

公称通径: DN500~3000mm
公称压力: PN1.0~2.5MPa
适用介质: 水、蒸汽、油品
适用温度: ≤80°C

Nominal Diameter: DN500~3000mm
Nominal Pressure: PN1.0~2.5MPa
Mediums: Water, steam, oil
Temperature Range: ≤80°C



UPVC气动塑料蝶阀
UPVC pneumatic plastic butterfly valve

公称通径: DN50~200mm
公称压力: PN1.0MPa
适用介质: PVC的兼容食品工业化学溶剂
适用温度: ≤60°C

Nominal Diameter: DN50~200mm
Nominal Pressure: PN1.0MPa
Mediums: PVC compatible chemical solvent for food industry
Temperature Range: ≤60°C



FD641X 粉尘蝶阀
Dust butterfly valve

公称通径: DN50~800mm
公称压力: PN0.2~0.6MPa
适用介质: 空气、烟气、含尘气体等
适用温度: ≤350°C

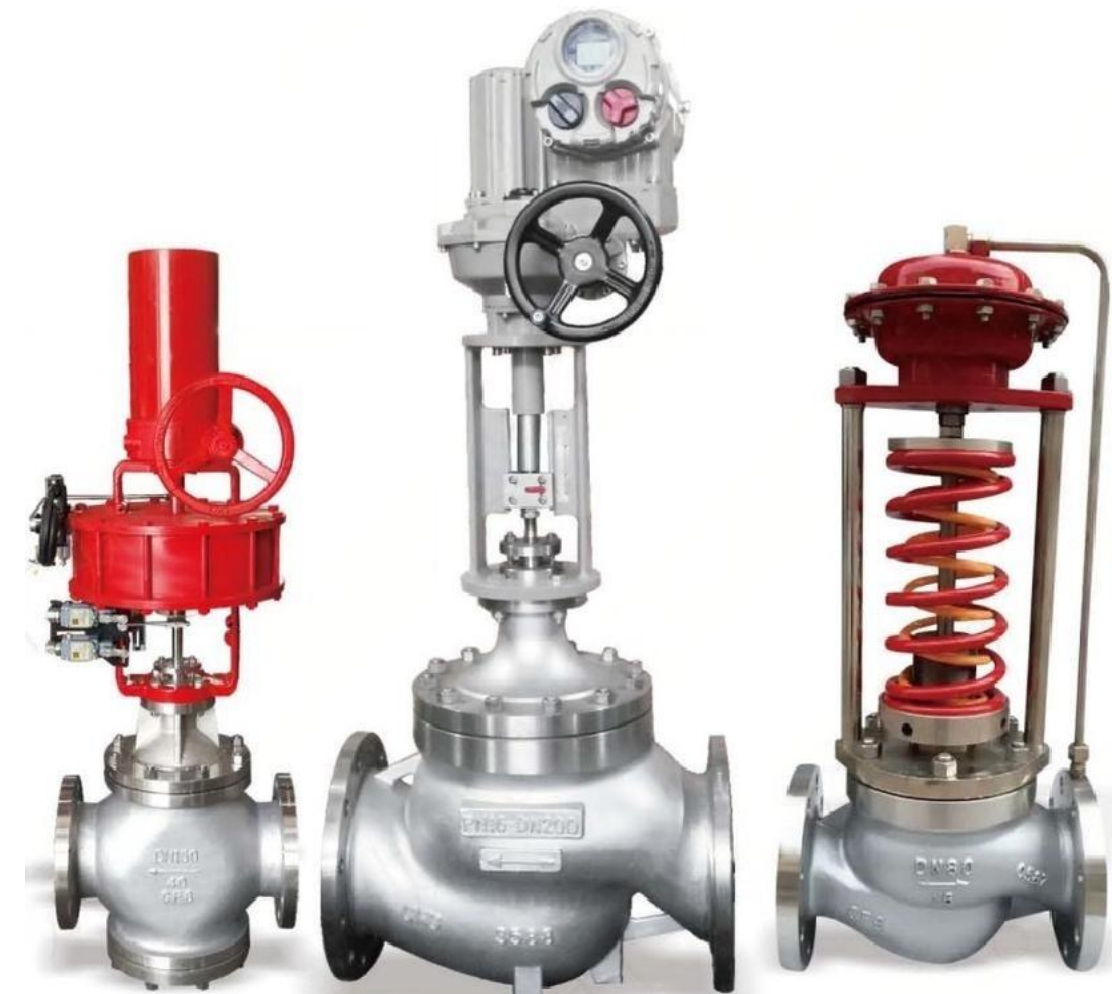
Nominal Diameter: DN50~800mm
Nominal Pressure: PN0.2~0.6MPa
Mediums: Water, steam, oil
Temperature Range: ≤350°C



FDSBD343HY 防盗锁闭蝶阀
Anti theft locking butterfly valve

公称通径: DN50~2000mm
公称压力: PN1.0~2.5MPa
适用介质: 水、蒸汽、油品
适用温度: ≤425°C

Nominal Diameter: DN50~2000mm
Nominal Pressure: PN1.0~2.5MPa
Mediums: Water, steam, oil
Temperature Range: ≤425°C



Gontrol-Valve Series

调节阀系列
Control valve series

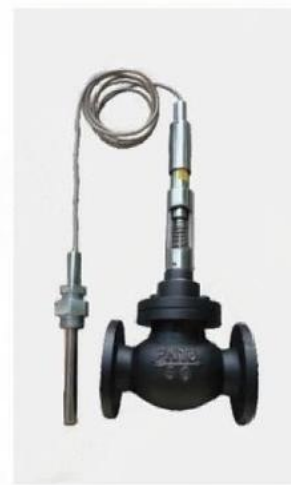
调节阀系列
Control valve series



ZXP 电动精小型套筒调节阀
Pneumatic fine small sleeve control valve

公称口径: DN20~400mm
公称压力: PN1.0~10.0MPa
适用介质: 水、蒸汽、油品
适用温度: ≤350°C

Nominal Diameter: DN20~400mm
Nominal Pressure: PN1.0~10.0MPa
Mediums: Water, steam, oil
Temperature Range: ≤350°C



ZTF-WK 自力式温度调节阀
Self-operated temperature control valve

公称口径: DN15~200mm
公称压力: PN1.0~4.0MPa
适用介质: 水、蒸汽、油品
适用温度: ≤350°C

Nominal Diameter: DN15~200mm
Nominal Pressure: PN1.0~4.0MPa
Mediums: Water, steam, oil
Temperature Range: ≤350°C



DZJHP(M) 低温气动调节阀
DZJHP(M) low temperature pneumatic control valve

公称口径: DN15~100mm
公称压力: PN1.0~6.4MPa
适用介质: 水、蒸汽、油品
适用温度: ≥-196°C

Nominal Diameter: DN15~100mm
Nominal Pressure: PN1.0~6.4MPa
Mediums: Water, steam, oil
Temperature Range: ≥-196°C



T941H 电动调节阀
T941H Electric

公称口径: DN15~200mm
公称压力: PN1.0~6.4MPa
适用介质: 水、蒸汽、油品
适用温度: ≤425°C

Nominal Diameter: DN15~200mm
Nominal Pressure: PN1.0~6.4MPa
Mediums: Water, steam, oil
Temperature Range: ≤425°C



ZXN 气动薄膜三通合流(分流)调节阀
Pneumatic diaphragm three confluence (shunt) control valve

公称口径: DN25~300mm
公称压力: PN1.0~10.0MPa
适用介质: 水、蒸汽、油品
适用温度: ≤425°C

Nominal Diameter: DN25~300mm
Nominal Pressure: PN1.0~10.0MPa
Mediums: Water, steam, oil
Temperature Range: ≤425°C



ZJHP 气动薄膜单座调节阀
Pneumatic diaphragm single-seat control valve

公称口径: DN25~400mm
公称压力: PN1.0~10MPa
适用介质: 水、蒸汽、油品
适用温度: ≤425°C

Nominal Diameter: DN25~400mm
Nominal Pressure: PN1.0~10MPa
Mediums: Water, steam, oil
Temperature Range: ≤425°C



ZSPQ 型气动活塞快速切断阀
ZSPQ pneumatic piston quick cut-off valve

公称口径: DN25~200mm
公称压力: PN1.0~6.4MPa
适用介质: 水、蒸汽、油品
适用温度: ≤425°C

Nominal Diameter: DN25~200mm
Nominal Pressure: PN1.0~6.4MPa
Mediums: Water, steam, oil
Temperature Range: ≤425°C



ZZYVP 自力式带指挥器减压阀(供氮阀)
Self-operated pressure reducing valve with pilot (nitrogen supply valve)

公称口径: DN20~100mm
公称压力: PN1.6~25MPa
适用介质: 水、蒸汽、油品
适用温度: ≤100°C

Nominal Diameter: DN20~100mm
Nominal Pressure: PN1.6~25MPa
Mediums: Water, steam, oil
Temperature Range: ≤100°C



ZZYP 自力式压力调节阀
Self-operated pressure control valve

公称口径: DN20~200mm
公称压力: PN1.0~10.0MPa
适用介质: 水、蒸汽、油品
适用温度: ≤350°C

Nominal Diameter: DN20~200mm
Nominal Pressure: PN1.0~10.0MPa
Mediums: Water, steam, oil
Temperature Range: ≤350°C



ZZYGZ 自力式高压铸造调节阀
ZZYGZ self-operated high pressure casting control valve

公称口径: DN20~250mm
公称压力: PN1.6~25MPa
适用介质: 水、蒸汽、油品
适用温度: ≤350°C

Nominal Diameter: DN20~250mm
Nominal Pressure: PN1.6~25MPa
Mediums: Water, steam, oil
Temperature Range: ≤350°C



ZZVP 自力式微压调节阀(泄氮阀)
ZZVP self-powered micro-pressure control valve (nitrogen relief valve)

公称口径: DN20~100mm
公称压力: PN1.6~25MPa
适用介质: 水、蒸汽、油品
适用温度: ≤100°C

Nominal Diameter: DN20~100mm
Nominal Pressure: PN1.6~25MPa
Mediums: Water, steam, oil
Temperature Range: ≤100°C



ZJHS, ZMAS 气动薄膜角形调节阀
Pneumatic film angle control valve

公称口径: DN15~200mm
公称压力: PN6.4~32MPa
适用介质: 水、蒸汽、油品
适用温度: ≤425°C

Nominal Diameter: DN15~200mm
Nominal Pressure: PN6.4~32MPa
Mediums: Water, steam, oil
Temperature Range: ≤425°C

调节阀系列
Control valve series



ZMQSY 气动薄膜Y型疏水阀
Pneumatic membrane Y type steam trap

公称通径: DN15~200mm
公称压力: PN6.4~32MPa
适用介质: 水、蒸汽、油品
适用温度: ≤425℃

Nominal Diameter: DN15~200mm

Nominal Pressure: PN6.4~32MPa

Mediums: Water, steam, oil

Temperature Range: ≤425℃



ZMHN 直接作用压力调节阀
Direct acting pressure control valve

公称通径: DN20~200mm
公称压力: PN1.0~10.0MPa
适用介质: 水、蒸汽、油品
适用温度: ≤200℃

Nominal Diameter: DN20~200mm

Nominal Pressure: PN1.0~10.0MPa

Mediums: Water, steam, oil

Temperature Range: ≤200℃



T961HY 给水调节阀
Feedwater control valve

公称通径: DN15~200mm
公称压力: PN6.4~32MPa
适用介质: 水、蒸汽、油品
适用温度: ≤425℃

Nominal Diameter: DN15~200mm

Nominal Pressure: PN6.4~32MPa

Mediums: Water, steam, oil

Temperature Range: ≤425℃



ZMBQ/AX 气动三通倒流、分流调节阀
Pneumatic three way flow back, shunt control valve

公称通径: DN20~300mm
公称压力: PN1.0~10.0MPa
适用介质: 水、蒸汽、油品
适用温度: ≤425℃

Nominal Diameter: DN20~300mm

Nominal Pressure: PN1.0~10.0MPa

Mediums: Water, steam, oil

Temperature Range: ≤425℃



WY945H/Y 电动双阀座减温减压阀
Electric double valve seat temperature reducing and pressure control valve

公称通径: DN40~300mm
公称压力: PN1.0~16.0MPa
适用介质: 水、蒸汽、油品
适用温度: ≤425℃

Nominal Diameter: DN40~300mm

Nominal Pressure: PN1.0~16.0MPa

Mediums: Water, steam, oil

Temperature Range: ≤425℃



T967 智能调节阀
Intelligent control valve

公称通径: DN20~300mm
公称压力: PN6.4~32MPa
适用介质: 水、蒸汽、油品
适用温度: ≤425℃

Nominal Diameter: DN20~300mm

Nominal Pressure: PN6.4~32MPa

Mediums: Water, steam, oil

Temperature Range: ≤425℃



©ther Valve Series

其他阀门系列
Other Valve Series



PZ73TC 薄型陶瓷排渣浆液阀
Thin ceramic slurry valve

公称口径: DN50~1000mm
公称压力: PN1.0~2.5MPa
适用介质: 干灰、矿浆、煤渣
适用温度: ≤350°C

Nominal Diameter: DN50~1000mm
Nominal Pressure: PN1.0~2.5MPa
Mediums: Dry ash, slurry, coal cinder
Temperature Range: ≤350°C



QS641TC 气动带手动陶瓷球阀
Pneumatic ceramic ball valve with manual

公称口径: DN15~250mm
公称压力: PN1.0~4.0MPa
适用介质: 煤粉、煤渣、粉状颗粒等
适用温度: ≤350°C

Nominal Diameter: DN15~250mm
Nominal Pressure: PN1.0~4.0MPa
Mediums: Pulverized coal, cinder, powder particles, etc
Temperature Range: ≤350°C



CS41H 自由浮球式疏水阀
Free floating ball drain valve

公称口径: DN15~100mm
公称压力: PN1.0~6.4MPa
适用介质: 水、蒸汽、油品
适用温度: ≤350°C

Nominal Diameter: DN15~100mm
Nominal Pressure: PN1.0~6.4MPa
Mediums: Water, steam, oil
Temperature Range: ≤350°C



LSB8 杠杆浮球式疏水阀
Lever floating ball trap

公称口径: DN15~100mm
公称压力: PN1.6MPa
适用介质: 水、蒸汽、油品
适用温度: ≤350°C

Nominal Diameter: DN15~100mm
Nominal Pressure: PN1.6MPa
Mediums: Water, steam, oil
Temperature Range: ≤350°C



Q341TC 陶瓷球阀
Ceramic ball valve

公称口径: DN40~200mm
公称压力: PN1.0~4.0MPa
适用介质: 煤粉、煤渣、粉状颗粒等
适用温度: ≤350°C

Nominal Diameter: DN40~200mm
Nominal Pressure: PN1.0~4.0MPa
Mediums: Powder particles, etc.
Temperature Range: ≤350°C



T644TC 气动陶瓷双闸板阀
Pneumatic ceramic double disc valve

公称口径: DN40~300mm
公称压力: PN1.0~2.5MPa
适用介质: 煤粉、煤渣、粉状颗粒等
适用温度: ≤350°C

Nominal Diameter: DN40~300mm
Nominal Pressure: PN1.0~2.5MPa
Mediums: Pulverized coal, cinder, powder particles, etc
Temperature Range: ≤350°C



FT43 杠杆浮球式疏水阀
Lever floating ball trap

公称口径: DN15~100mm
公称压力: PN1.6MPa
适用介质: 水、蒸汽、油品
适用温度: ≤350°C

Nominal Diameter: DN15~100mm
Nominal Pressure: PN1.6MPa
Mediums: Water, steam, oil
Temperature Range: ≤350°C



CS49H 热动力式疏水阀
Thermal power steam trap

公称口径: DN15~100mm
公称压力: PN1.6MPa
适用介质: 水、蒸汽、油品
适用温度: ≤350°C

Nominal Diameter: DN15~100mm
Nominal Pressure: PN1.6MPa
Mediums: Water, steam, oil
Temperature Range: ≤350°C



J41TC 陶瓷截止阀
Ceramic globe valve

公称口径: DN15~200mm
公称压力: PN1.0~6.4MPa
适用介质: 煤粉、煤渣、粉状颗粒等
适用温度: ≤350°C

Nominal Diameter: DN15~200mm
Nominal Pressure: PN1.0~6.4MPa
Mediums: Pulverized coal, cinder, powder particles, etc
Temperature Range: ≤350°C



SZ643TC 气动摆动式陶瓷进料阀
Pneumatic swing type ceramic feed valve

公称口径: DN150~350mm
公称压力: PN1.0MPa
适用介质: 煤粉、煤渣、粉状颗粒等
适用温度: ≤350°C

Nominal Diameter: DN150~350mm
Nominal Pressure: PN1.0MPa
Mediums: Powder, etc
Temperature Range: ≤350°C



ZPQ 防爆阻火呼吸阀
Explosion fire breathing valve

公称口径: DN25~400mm
公称压力: PN1.0~4.0MPa
适用介质: 水、蒸汽、油品
适用温度: ≤60°C

Nominal Diameter: DN25~400mm
Nominal Pressure: PN1.0~4.0MPa
Mediums: Water, steam, oil
Temperature Range: ≤60°C



J41H 法兰针型阀
Flange needle valve

公称口径: DN15~50mm
公称压力: PN1.0~32.0MPa
适用介质: 水、蒸汽、油品
适用温度: ≤425°C

Nominal Diameter: DN15~50mm
Nominal Pressure: PN1.0~32.0MPa
Mediums: Water, steam, oil
Temperature Range: ≤425°C

其它阀门系列
Other Valve Series



J24针形阀
Needle valve

公称口径: DN6~25mm
公称压力: PN1.0~32.0MPa
适用介质: 水、蒸汽、油品
适用温度: ≤425°C

Nominal Diameter: DN6~25mm
Nominal Pressure: PN1.0~32.0MPa
Mediums: Water, steam, oil
Temperature Range: ≤425°C



DXF-II 电动双层卸灰阀
Electric double-layer unloading valve

公称口径: DN150~700mm
公称压力: PN0.5~2.5MPa
适用介质: 煤气及有毒、有害、易燃气体
适用温度: ≤300°C

Nominal Diameter: DN150~700mm
Nominal Pressure: PN0.5~2.5MPa
Mediums: flammable gas
Temperature Range: ≤300°C



F943X 电动盲板阀
Electric blind plate valve

公称口径: DN300~2000mm
公称压力: PN0.5~2.5MPa
适用介质: 煤气及有毒、有害、易燃气体
适用温度: ≤300°C

Nominal Diameter: DN300~2000mm
Nominal Pressure: PN0.5~2.5MPa
Mediums: Gas and toxic, hazardous, flammable gas
Temperature Range: ≤300°C



FP941H 封闭式播板阀
Closed type board plug valve

公称口径: DN300~2800mm
公称压力: PN0.5~2.5MPa
适用介质: 煤气及有毒、有害、易燃气体
适用温度: ≤300°C

Nominal Diameter: DN300~2800mm
Nominal Pressure: PN0.5~2.5MPa
Mediums: Gas and toxic, hazardous, flammable gas
Temperature Range: ≤300°C



XZ43X 轨道式旋塞阀
Orbit plug valve

公称口径: DN150~900mm
公称压力: PN1.0~32.0MPa
适用介质: 水、蒸汽、油品
适用温度: ≤150°C

Nominal Diameter: DN150~900mm
Nominal Pressure: PN1.0~32.0MPa
Mediums: Water, steam, oil
Temperature Range: ≤150°C



ALX43F 法兰提升式硬密封旋塞阀
Flange lifting type hard sealing plug valve

公称口径: DN15~350mm
公称压力: PN1.0~16.0MPa
适用介质: 水、蒸汽、油品
适用温度: ≤250°C

Nominal Diameter: DN15~350mm
Nominal Pressure: PN1.0~16.0MPa
Mediums: Water, steam, oil
Temperature Range: ≤250°C

工程案例
ENGINEERING CASES

我们长期致力于服务国内诸多重大项目和众多大型工程, 取得了无数骄人业绩。
we have been comiteadto serving many major projects and large-scale projects in China for a long time



- 武岗裕轮天然气有限公司
- 桑植裕轮远航天然气有限公司
- 肇东中石油昆仑山燃气有限公司
- 中国石油天然气第一建设公司
- 采购创业城22#地块等庭院管网燃气工程项目
- 白银中石油昆仑山燃气有限公司
- 中国石油天然气第一建设公司西气东输三线西段玛纳斯压气站项目
- 广州燃气集团有限公司蜗轮蝶阀、球阀采购项目
- 广州花都广煤燃气有限公司
- 广州南沙燃气股份有限公司
- 乐山地区天然气输气管道工程
- 十堰中石油昆仑燃气有限公司
- 大庆中石油昆仑燃气有限公司
- 克拉苏气田克深天然气处理厂
- 巢湖市S105次高压天然气管道工程
- 浙江嘉化工业园投资发展公司
- 兰州化学工业公司
- 福建纺织化纤集团有限公司技改扩建PVA至60Kt/a项目
- 吉林康乃尔化学工业有限公司
- 浙江嘉化泛柯化工有限公司
- 岳阳汉臣石化有限公司
- 陕西煤化工技术工程中心有限公司DMTO装置项目

- 云南云维集团有限公司甲醇开发项目
- 陕西北元化工集团有限公司
- 天津海晶聚合6万吨/年高性能锦纶6切片项目
- 盘锦远孚化工有限公司辽滨分公司
- 沧州大化股份有限公司聚海分公司
- 山东新时代药业有限公司化学原料药合成中试区、生工制药区
- 青岛安邦炼化有限公司
- 河南省中原大化集团有限责任公司
- 山东金诚重油化工有限公司
- 铜陵化工集团供销有限责任公司五万吨材料项目
- 陕西煤化能源有限公司
- 内蒙古达信化工气体有限公司
- 兖州煤业鄂尔多斯能化有限公司
- 日照岚桥港口石化有限公司50000m³原油罐区工程
- 中国石油集团长城钻探工程有限公司
- 内蒙古荣信化工有限公司
- 神华物资集团有限公司
- 中国神华国际工程有限公司
- 河南国基建设集团大江(焦作)项目
- 北京迪威尔石油天然气技术开发有限公司DRK加药撬项目
- 华西东鑫垣化工有限责任公司煤化工煤气脱硫制氢产业项目
- 东鑫垣化工有限公司煤化工煤气脱硫制氢产业项目

工程案例

ENGINEERING CASES

我们长期致力于服务国内诸多重大项目 and 众多大型工程，取得了无数骄人业绩。
We have been committed to serving many major projects and large-scale projects in China for a long



- 阳煤化工股份有限公司年度战略集采协议
- 阳煤集团太原化工新材料有限公司己二酸项目
- 阳煤集团寿阳化工有限责任公司
- 中天合创鄂尔多斯煤炭深加工示范工程
- 温州港口石化仓储有限公司
- 温州市龙湾龙东石化仓储有限公司
- 烟台泰山石化
- 湖南省天然气有限公司汨罗分公司
- 中触煤新材料股份有限公司
- 淮安洪阳化工有限公司
- 南京凯盛云南红塔项目
- 南京凯盛广西天等项目
- 安徽华尔泰化工股份有限公司
- 安徽泉盛化工有限公司
- 中国石油天然气股份有限公司西藏销售仓储分公司
- 张家口氢能产业化应用示范建设项目
- 邵阳市云峰新能源科技有限公司
- 天津爱旭太阳能科技有限公司年产3.8GW 高效硅基电池项目
- 睿能太宇（沈阳）能源技术有限公司
- 中亚能源有限责任公司
- 山东兴达新能源有限公司
- 河北灵达环保能源有限责任公司

- 久泰能源内蒙古有限公司
- 上海航天能源股份有限公司SAESO0001490 项目
- 中煤陕西榆林能源化工有限公司甲醇醋酸系列深加工及综合利用项目
- 北京中亚时代能源技术有限公司
- 山东江口生物科技有限公司
- 河北凯德生物材料有限公司
- 希杰（聊城）生物科技有限公司
- 吉林海资生物工程技术有限公司化工中间体项目
- 阳光凯迪生物质万吨级合成油示范项目
- 开滦精煤股份有限公司25万吨t/a甲醇项目
- 山西焦化股份有限公司150万吨/年焦炉扩建项目
- 20×104t/a醋酸乙烯、10×104t/a聚乙烯醇项目
- 辽宁华锋化工有限公司23万吨/年苯深加工项目12万吨/年环己酮装置
- 久泰能源科技有限公司乙二醇阀门设备
- 重庆华峰化工有限公司乙二酸项目
- 伊朗亚达瓦兰油田三甘醇脱水项目
- 大庆石油管理局
- 长庆油田分公司
- 中国石油天然气股份有限公司冀东油田分公司
- 青海油田分公司
- 中国石油天然气股份有限公司吐哈油田分公司

- 鞍钢集团新钢铁有限责任公司
- 鞍钢集团工程技术有限公司
- 鞍钢冷轧钢板（莆田）有限公司
- 鞍钢联众（广州）不锈钢有限公司
- 武汉钢铁（集团）公司
- 武钢集团国际经济贸易总公司
- 武钢国贸总公司年度战略集采协议
- 北京首钢股份有限公司
- 北京首钢冷轧薄板有限公司
- 河北省首钢迁安钢铁有限责任公司
- 首钢长治钢铁有限公司
- 河北钢铁集团龙海钢铁有限公司
- 河北钢铁集团金鼎重工股份有限公司
- 河北钢铁集团矿业有限公司
- 邯郸钢铁集团有限责任公司
- 天津冶金集团扎三友发钢铁有限公司
- 山东莱钢永锋钢铁有限公司
- 济南钢铁股份有限公司
- 聊城厚广金属材料有限公司
- 新巴尔虎右旗新鑫矿业有限责任公司
- 乌拉特后旗瑞峰铅冶炼有限公司8万t/a 铅冶炼工程
- 呼伦贝尔驰宏矿业铅锌冶炼项目
- 满洲里华博矿业有限责任公司
- 中铁资源集团满洲里有限公司
- 内蒙古伊泽矿业投资有限公司
- 鲁中矿业有限公司
- 西藏华泰龙矿业开发有限公司

- 云南迪庆有色金属有限责任公司
- 铜陵有色金属集团股份有限公司
- 西藏玉龙铜业股份有限公司玉龙铜矿改扩建1800万t/a选厂工程
- 中钢设备有限公司
- 中国黄金集团西藏华泰龙矿业开发有限公司甲玛铜多金属矿项目
- 中国黄金集团内蒙古矿业股份有限公司乌山项目
- 河南中原黄金冶炼厂有限责任公司
- 内蒙古金豆镁业有限公司
- 河北东梁黄金矿业有限责任公司
- 苏尼特金曦黄金矿业有限责任公司
- 哈萨克斯坦MST 焦化厂
- 福建三钢闽光股份有限公司
- 福建省三钢（集团）有限责任公司
- 中国铝业重庆800Kt/a氧化铝工程
- 中铝物资有限公司年度战略集采协议
- 吉林吉恩镍业股份有限公司
- 闻喜县银光华盛镁业有限公司
- 广西来宾银海铝业有限责任公司
- 温州龙铸钢铁集团有限公司
- 昆鹏铝业10万t/a阳极铜工程
- 秦皇岛首泰金属材料有限公司
- 安徽铜冠有色金属（池州）有限责任公司
- 鞍钢攀枝花钢厂
- 鞍钢炼铁总厂
- 鞍钢化学科技有限公司
- 苏州钢铁厂
- 福建青拓镍业有限公司

工程案例

ENGINEERING CASES

我们长期致力于服务国内诸多重大项目 and 众多大型工程，取得了无数骄人业绩。

We have been committed to serving many major projects and large-scale projects in China for a long time, and have made remarkable achievements.



- 常德牛力水泥有限公司WHR工程 (4.5MW)
- 贵州金久水泥有限公司4000t/d熟料水泥生产线建设工程
- 河北燕赵水泥有限公司低温余热电站工程9MW
- 亚泰集团哈尔滨水泥有限公司
- 费县沂州水泥股份有限公司5000t/d熟料水泥窑纯低温余热发电工程
- 中材汉江水泥股份有限公司2500t/d熟料水泥生产线技改工程
- 辽阳天瑞水泥有限公司5000t/d水泥熟料生产线纯低温余热发电工程 (9MW)
- 山东临沂沂州水泥股份有限公司2500t/d熟料水泥窑纯低温余热发电工程
- 湘潭中材牛力水泥有限公司低温余热发电工程 (9MW)
- 青海泰宁水泥有限公司水泥生产线配套4.5MW纯低温余热发电项目
- 广元海螺水泥余热发电项目
- 贵州大方余热发电项目
- 达州海螺水泥余热发电项目
- 祁阳海螺水泥余热发电项目
- 南召天瑞水泥余热发电项目
- 云南澄江华荣水泥余热发电项目
- 秦皇岛浅野水泥余热发电项目
- 云南镇雄三和水泥余热发电项目
- 贵州港安水泥余热发电项目
- 云南兴建水泥余热发电项目
- 禹州天瑞水泥余热发电项目
- 遵义盘江水泥余热发电项目
- 广东阳春海螺水泥余热发电项目
- 云南富源宏水泥余热发电项目
- 贵州安龙海螺水泥余热发电项目

- 益阳海螺水泥余热发电项目
- 沿河西南水泥余热发电项目
- 池州海螺水泥有限责任公司
- 华坪定华水泥余热发电项目
- 富民金锐水泥余热发电项目
- 标宗明驰水泥余热发电项目
- 远东亚鑫水泥余热发电项目
- 贵州梵净山水泥脱硝改造项目
- 重庆长寿西南水泥脱硝改造项目
- 桐庐南方水泥脱硝改造项目
- 兰溪诸葛水泥脱硝改造项目
- 巴中海螺水泥有限公司
- 北流海螺水泥有限责任公司
- 蒙平海螺水泥余热发电项目
- 贵阳海螺盘江水泥余热发电项目
- 甘肃恒亚水泥脱硝改造项目
- 丹东凤凰山水泥余热发电项目
- 江苏金峰水泥余热发电项目
- 安徽皖维水泥余热发电项目
- 上虞海螺水泥有限责任公司
- 庐山海螺项目
- 英德海螺辊压机技改项目
- 双峰海螺水泥有限公司
- 湛江海螺水泥有限责任公司
- 滕安海螺水泥有限责任公司
- 涇源海螺水泥有限公司
- 扶绥新宁海螺水泥有限公司
- 分宜海螺水泥有限公司
- 宁波海螺水泥有限公司

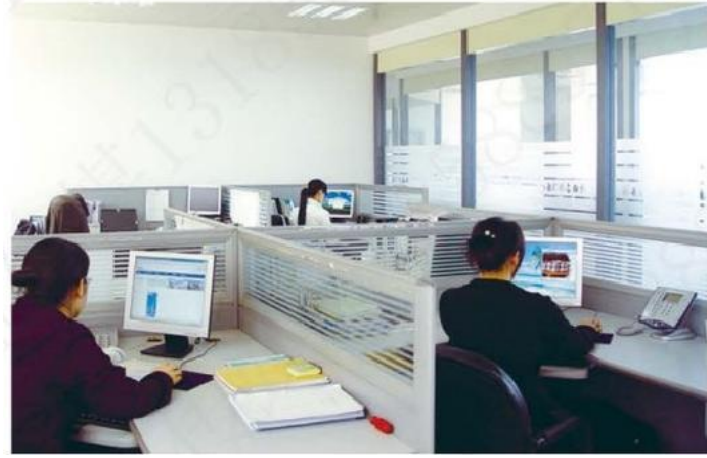
- 四川泸州川南发电有限责任公司泸州电厂2x600MW工程
- 阜阳华润电力有限公司2x600MW燃煤超临界机组工程
- 南阳天益发电有限责任公司鸭河口电厂 (2x600MW超临界火电机组)
- 国电聊城发电厂2x600MW机组工程
- 华能海南东厂电厂2x350MW机组工程
- 国电海南西南部电厂2x350MW机组工程水岛EPC总承包项目
- 山西国电电力股份有限公司2x350MW煤矸石综合利用发电工程
- 大唐理春发电厂 (2x330MW机组)
- 内蒙古准大发电有限责任公司2x300MW机组工程
- 甘肃永昌电厂“上大压小” (2x300MW级) 工程
- 大唐鸡西第二热电厂2x300MW煤矸石热电联产工程
- 丹东金山热电厂 (2x300MW) 工程
- 徐矿集团新疆阿克苏热电有限公司2x200供热机组工程
- 平山县敬业冶炼有限公司三期2x260 烧结余热回收发电工程
- 徐矿集团新疆阿克苏热电有限公司2x200供热机组工程
- 印度尼西亚共和国万丹省苏拉巴亚火电厂8号机项目
- 泰国京都The K5/K6 WHR power plan (2X16MW) for Siam City Cement Public Company Limited 项目
- 印尼亚齐火电项目
- 中国能源建设集团广东火电工程有限公司孟加拉4G项目
- 大唐七台河发电有限责任公司
- 大唐 (群力) 集中供热热网工程
- 国电康平发电有限公司
- 国电吉林热电厂有限公司
- 国电吉林龙华白城热电厂

- 国电吉林龙华长春热电厂
- 国电沈阳热力有限公司
- 国电元宝山电厂
- 华能吉林发电有限公司长春热电厂
- 太原刚玉东山热电有限公司
- 中山火力发电有限公司
- 广西白色资源综合利用电厂循环流化床机组工程
- 河南省濮阳市热力公司
- 孝义市热力公司
- 河北西柏坡发电有限责任公司
- 羊八井地热电厂
- 滁州中材节能余热发电有限公司
- 中天合创鄂尔多斯煤炭深加工示范项目热电装置锅炉烟气脱硫工程
- 皖能合肥发电有限公司供热互联项目
- 安达生物质发电项目
- 杭州临江环保热电有限公司
- 浙江浙能绍兴滨海热电有限责任公司
- 枣庄惠众热力有限公司南郊首站配套供热管网工程
- 临沂市圣龙供热有限公司城区供水、供热管网工程
- 侯马市路东新区集中供热管网工程
- 淄博华星热力有限公司高温水热网工程
- 邹平齐星热力有限公司邹平供热管网项目
- 西藏燃气供暖项目
- 克拉玛依供热系统工程项目
- 常州市高铁新区热力有限公司供热管网项目

销售中心

SALES CENTER

公司建立了完善的售前、售中、售后服务体系，
Company has established a sound pre-sale, in sale, after-sales service system.



◆售前服务 Pre sales services

1. 协助用户做好产品选型工作。
2. 提供用户所订产品的产品介绍、性能参数、安装尺寸以及相关注意事项。
3. 提供用户所需的其他技术资料。

1. Assist users in product selection.
2. Provide product introduction, performance parameters, installation dimensions and relevant precautions of the products ordered by users.
3. Provide other technical data required by users.

◆售后服务 After-sale service

1. 本公司配有专职维修工，具有多年派送系统维护和维修经验，完全满足用户售后服务要求。
2. 免费指导产品的安装与调试。
3. 产品到货后的现场安装过程中遇到问题，我们将在接到反馈通知后2小时内根据用户的具体情况制定安装方案，并指导用户对产品进行正确安装连接。
4. 在产品调试过程中，我公司可安排专人到场指导调试。
5. 保修一年，终身维修：

质保期内：实行三包（保修、包换、包退）。在无人为损坏或操作不当的情况下出现质量问题，由我公司负责免费维修，若维修不好则保证更换同型号产品，若更换还未解决质量问题则保证退货。

质保期外：超过质保期我公司负责终身维护，零件成本及相关费用由用户承担。

6. 我公司为用户提供全天候售后服务。接到报修电话2小时内做出反应（主要是应对方案），市内用户12小时内派人上门检修，与外地用户协商后我方48小时内赶赴现场或以双方协商约定为准。

1. The company is equipped with full-time maintenance workers, with many years of experience in maintenance and repair of the delivery system, fully meet the requirements of after-sales service of users.
2. Free guidance for product installation and debugging.

hours after receiving the feedback notice, and guide the users to correctly install and connect the products.

4. In the process of product debugging, our company can arrange special personnel to guide the debugging.

5. One year warranty, lifetime maintenance:

Within the warranty period: implement Three Guarantees (warranty, replacement and return). In case of quality problems caused by no one's damage or improper operation, our company shall be responsible for the annual maintenance. If the repair is not good, it is guaranteed to replace the products of the same model, and if the replacement has not solved the quality problems, it is guaranteed to return the products.

Beyond the warranty period: beyond the warranty period, our company is responsible for long-term maintenance, and the cost of parts and related expenses are borne by users.

6. Our company provides all-weather after-sales service for users. After receiving the repair call, we will respond within 2 hours (mainly the response plan). The city users will send people to visit the site within 12 hours. After the consultation of foreign users, we will rush to the site within 48 hours subject to the agreement of both parties.

销售网络

SALES NETWORK

浙江善流阀门科技有限公司经销网络遍布全国 各省，
5个自治区，4个直辖市。以楼宇、市政水系列阀门
为主打产品，辅以各类工业阀门。业绩包含全国各大
知名地产商、市政、水厂、电厂等。

ZHEJIANG SHANLIU VALVE TECHNOLOGY CO., LTD.
has 23 valve distribution networks in 5 provinces and
autonomous regions. Building, municipal water series
valves as the main, supplemented by various industrial
valves. The achievements include famous real
state developers, municipal administration, water plants, power
plants, etc.

